

Working Instructions

- mechanical -



Xperia™ XA1

G3112, G3116, G3121, G3123, G3125

CONTENTS

| | | |
|----------|---|-----------|
| 1 | Exterior Views..... | 5 |
| 1.1 | G3112/G3116/G3121/G3123/G3125..... | 5 |
| 2 | Tools | 6 |
| 3 | Mandatory Replacement Parts List | 9 |
| 4 | Disassembly..... | 10 |
| 4.1 | Cap Tray..... | 12 |
| 4.2 | Battery Cover Assy | 12 |
| 4.3 | Antenna Box Assy BT/Wi-Fi | 16 |
| 4.4 | Main Camera..... | 17 |
| 4.5 | Main PBA | 18 |
| 4.6 | Conductive Tape Front Camera | 20 |
| 4.7 | Front Camera..... | 20 |
| 4.8 | Audio Jack FPC..... | 20 |
| 4.9 | Battery & Film Mylar Battery Left & Film Mylar Battery Right..... | 21 |
| 4.10 | Speaker Box Assy..... | 22 |
| 4.11 | Sub PBA..... | 23 |
| 4.12 | Spring Main Camera..... | 25 |
| 4.13 | Side Panel Key | 25 |
| 4.14 | Sponge Front Assy Right Side..... | 25 |
| 4.15 | RF Cable Black (For G3121, G3123, G3125) | 26 |
| 4.16 | RF Cable White (For G3121, G3123, G3125) | 26 |
| 4.17 | RF Cable Gray (For G3112, G3116) | 26 |
| 4.18 | Side Panel Cap | 26 |
| 4.19 | Sponge Front Assy Left Side | 27 |
| 4.20 | Side Key FPC Assy | 27 |
| 4.21 | CU Label Tray | 29 |
| 4.22 | Ear Speaker & Adhesive Ear Speaker..... | 29 |
| 5 | Reassembly..... | 31 |
| 5.1 | Front Cover Assy & Ear Speaker & Adhesive Ear Speaker..... | 32 |
| 5.2 | CU Label Tray | 32 |
| 5.3 | Sponge Front Assy Right Side & Sponge Front Assy Left Side | 33 |
| 5.4 | Side Panel Cap | 34 |
| 5.5 | RF Cable White (For G3121, G3123, G3125) | 34 |
| 5.6 | RF Cable Black (For G3121, G3123, G3125) | 35 |
| 5.7 | RF Cable Gray (For G3112, G3116) | 35 |
| 5.8 | Side Panel Key | 35 |
| 5.9 | Spring Main Camera..... | 36 |
| 5.10 | Sub PBA..... | 36 |

| | | |
|------|---|----|
| 5.11 | Speaker Box Assy | 37 |
| 5.12 | Battery & Film Mylar Battery Left & Film Mylar Battery Right..... | 38 |
| 5.13 | Audio Jack FPC..... | 39 |
| 5.14 | Front Camera..... | 40 |
| 5.15 | Conductive Tape Front Camera | 41 |
| 5.16 | Main PBA | 41 |
| 5.17 | Main Camera..... | 43 |
| 5.18 | Antenna Box Assy | 44 |
| 5.19 | Battery Cover Assy | 45 |
| 5.20 | Cap Tray..... | 48 |
| 6 | Battery Reuse Instruction..... | 49 |
| 6.1 | Battery Handling Notices..... | 49 |
| 6.2 | Dot Mark Check..... | 49 |
| 6.3 | Dot Marking 1 | 49 |
| 6.4 | Appearance Check..... | 50 |
| 6.5 | BtB Connector Check | 52 |
| 6.6 | Dot Marking 2 | 53 |
| 7 | Revision History | 54 |

For general information about mechanical repair related issues, refer to 1220-1333: Generic Repair Manual - mechanical

Always firstly disconnect the Battery BtB connector to cut off power supply when the Battery Cover Assy is disassembled.

Always connect the Battery BtB connector as last step before reassemble Battery Cover Assy.

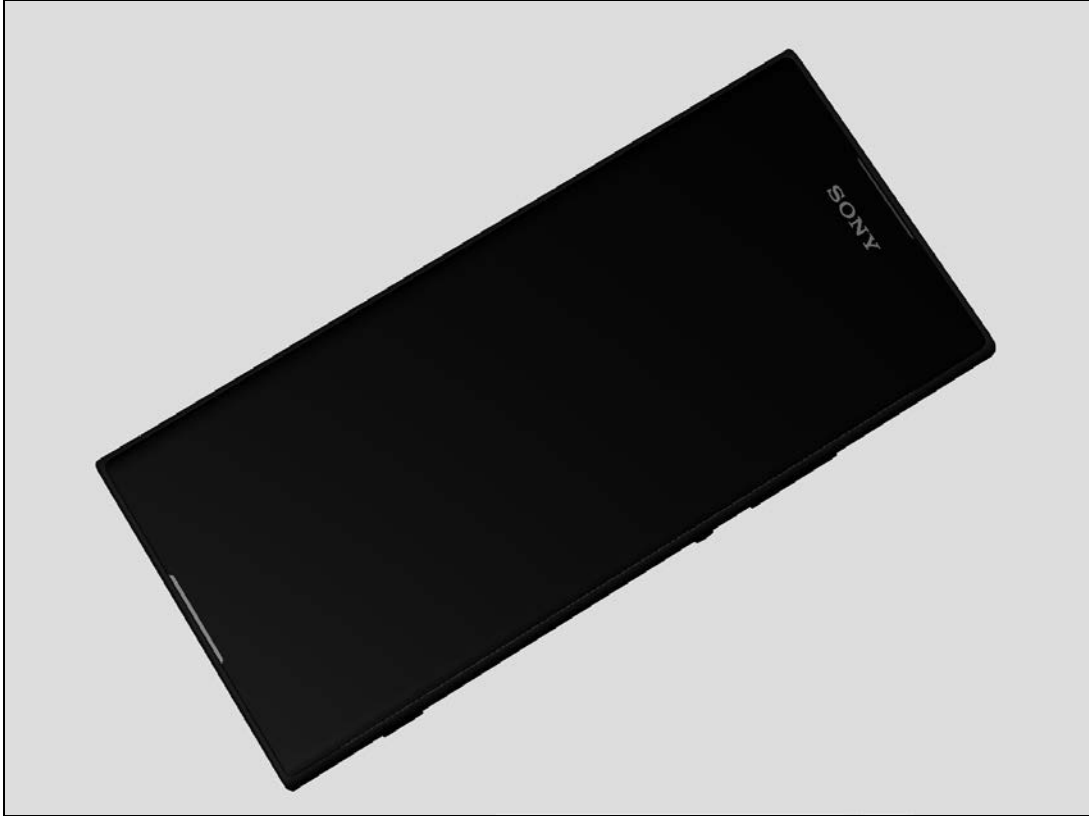
After replacing Main PBA & Front Cover Assy, calibration by CS-Everest and Flashing Customize by Emma is required.

Calibration tool “CS-Everest 1309-7255” is available at Repair Information.

It is posted under the RE4251: Repair Mechanical – Tools and Equipment (including Repair Software).

1 Exterior Views

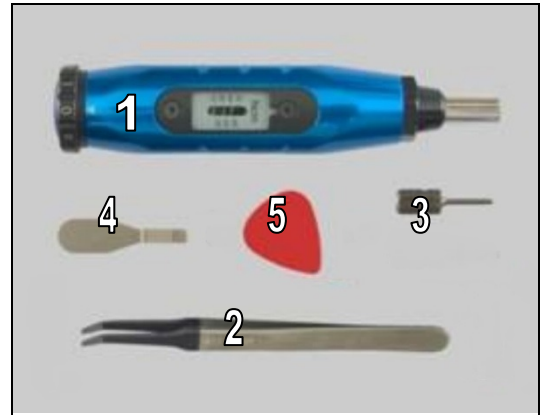
G3112/G3116/G3121/G3123/G3125



2 Tools

SPECIAL TOOLS

1. Torque Screwdriver
2. Flex Film Assembly Tool
3. Bits JCIS No.0
4. Front Opening Tool
5. Guitar Pick



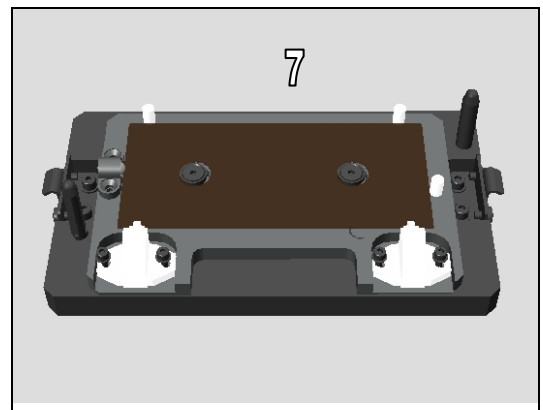
6. Panels Adhesive Fixture (1307-4982)



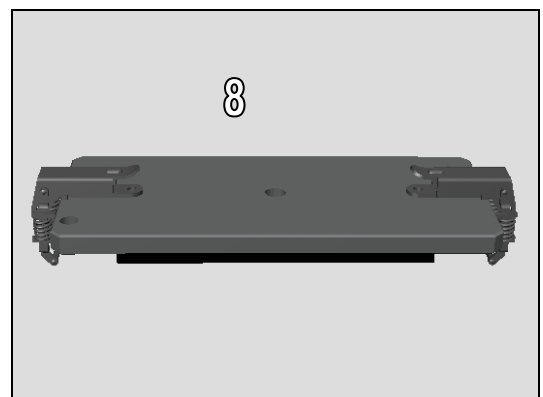
7. Bottom Press exchange plate (1307-1726)

This plate is upgrade Rear Panel Press tool Bottom 1302-7285 (for F31, F33).

- see the SI 13115 (G31xx Procedure to upgrade Press Tool Bottom) for how to assemble with it.

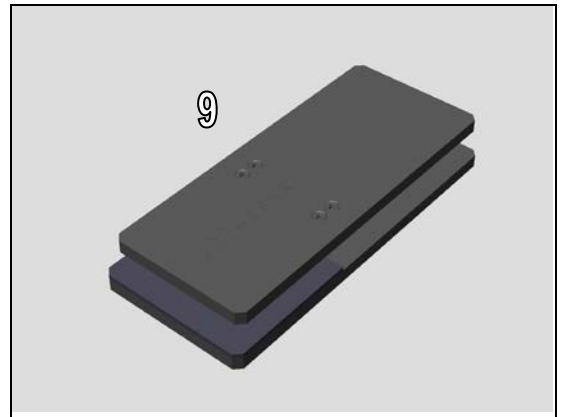


8. Rear Cover Press Top (1307-1783)

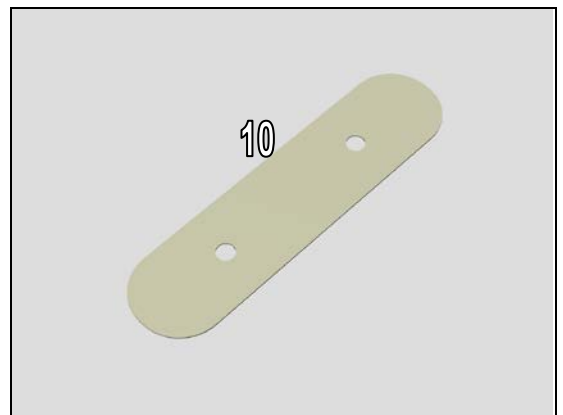


Tools

9. Press Clamp (1302-3698)



10. Flexible Disassembly tool (1284-7796)



STANDARD TOOLS

1. Pointed Plastic Tweezers

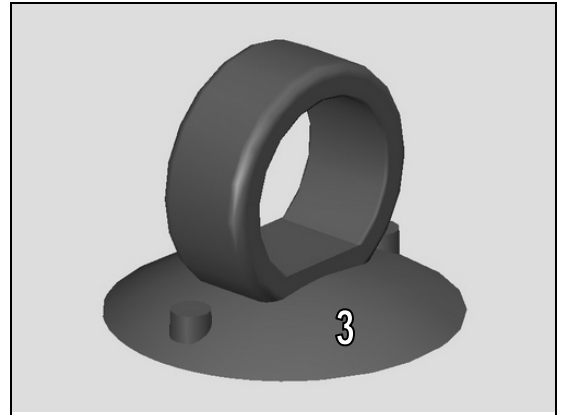


2. T5 Screwdriver



Tools

3. Suction cup



4. Hot Air Device



5. Media Cable Type C Cable (Black) (1302-1935)



3 Mandatory Replacement Parts List

The Mandatory Replacement Parts List is embedded.
Click the icon to open the file.



Targeted replacement parts are listed

| Mandatory replacement part | SPACE | Refurbish | Antenna Assy (with BT/Wi-Fi/GPS) | Audio Jack | Battery | Battery Cover Assy | Display Cover Assy | Front Camera | Key Camera | Key Power_Volume | Main Antenna Speaker Assy | Main Camera Lens Assy | NFC Antenna | Receiver | RF Cable | Side Deco Left | Side Deco Right | Side Key FPC Assy | Sub PBA Assy | Main PBA |
|---|--------------|-----------|----------------------------------|------------|---------|--------------------|--------------------|--------------|------------|------------------|---------------------------|-----------------------|-------------|----------|----------|----------------|-----------------|-------------------|--------------|----------|
| Adhesive Battery Cover Bottom | 306Q1N1000 | | 1 | 1 | 1 | 1 | 1 | 1 | 1 | 1 | 1 | 1 | 1 | 1 | 1 | 1 | 1 | 1 | 1 | 1 |
| Adhesive Battery Cover Left | 306Q1N10097V | | 1 | 1 | 1 | 1 | 1 | 1 | 1 | 1 | 1 | 1 | 1 | 1 | 1 | 1 | 1 | 1 | 1 | 1 |
| Adhesive Battery Cover Right | 306Q1N10094V | | 1 | 1 | 1 | 1 | 1 | 1 | 1 | 1 | 1 | 1 | 1 | 1 | 1 | 1 | 1 | 1 | 1 | 1 |
| Adhesive Battery Cover Top | 306Q1N10050 | | 1 | 1 | 1 | 1 | 1 | 1 | 1 | 1 | 1 | 1 | 1 | 1 | 1 | 1 | 1 | 1 | 1 | 1 |
| Adhesive Camera Key FPC | 306Q1N10020 | 1 | | | | | | | | | | | | | | | | | | |
| Adhesive LCM Left Side | 306Q1N10030 | 1 | | | | | | | | | | | | | | | | | | |
| Adhesive LCM Right Side | 306Q1N10040 | 1 | | | | | | | | | | | | | | | | | | |
| Adhesive Main Camera | 306Q1N10040 | 1 | | | | | | | | | | | | | | | | | | |
| Adhesive NFC | 306Q1N10010 | | 1 | 1 | 1 | 1 | 1 | 1 | 1 | 1 | 1 | 1 | 1 | 1 | 1 | 1 | 1 | 1 | 1 | 1 |
| Adhesive Power_Volume Key FPC | 306Q1N10011V | 1 | | | | | | | | | | | | | | | | | | |
| Adhesive Receiver | 306Q1N10030 | | | | | | | | | | | | | | | | | | | |
| Adhesive Side Deco Left | 306Q1N10100 | | | | | | | | | | | | | | | | | | | |
| Adhesive Side Key FPC_A | 306Q1N10030 | 1 | | | | | | | | | | | | | | | | | | |
| Adhesive Side Key FPC_B | 306Q1N10040 | 1 | | | | | | | | | | | | | | | | | | |
| Adhesive Spongy Front Camera | 306Q1N10030 | | | | | | | | | | | | | | | | | | | |
| Antenna Assy DIV/BT/Wi-Fi/GPS F3111/F3112 | 78PA3700010 | | | | | | | | | | | | | | | | | | | |
| Antenna Assy DIV/BT/Wi-Fi/GPS F3113 | 78PA3700020 | | | | | | | | | | | | | | | | | | | |
| Antenna Assy DIV/BT/Wi-Fi/GPS F3115/F3116 | 78PA3700030 | | | | | | | | | | | | | | | | | | | |
| Audio Jack Assy | 78PA3700010 | 1 | | | | | | | | | | | | | | | | | | |
| Battery | 1286-9239 | | | | | | | | | | | | | | | | | | | |
| Battery Cover Assy Black | 78PA3000030 | | | | | | | | | | | | | | | | | | | |
| Battery Cover Assy White | 78PA3000010 | 1 | | | | | | | | | | | | | | | | | | |
| Battery Cover Assy Lime Gold | 78PA3000040 | | | | | | | | | | | | | | | | | | | |
| Battery Cover Assy Rose Gold | 78PA3000050 | | | | | | | | | | | | | | | | | | | |
| Cap SIM/SD Black | 306JYV3602V | | | | | | | | | | | | | | | | | | | |
| Cap SIM/SD Silver | 306JYV3601V | | | | | | | | | | | | | | | | | | | |
| Cap SIM/SD Lime Gold | 306JYV3603V | | | | | | | | | | | | | | | | | | | |
| Cap SIM/SD Rose Gold | 306JYV3604V | | | | | | | | | | | | | | | | | | | |
| Conductive Gasket Audio Jack | 306A1N10010 | | | | | | | | | | | | | | | | | | | |
| Conductive Gasket Main Camera Bracket | 306AVY3605V | | | | | | | | | | | | | | | | | | | |
| Conductive Tape Front Camera | 306A1N10100 | | | | | | | | | | | | | | | | | | | |
| Conductor Foil Battery Cover | 306A1N10050 | | | | | | | | | | | | | | | | | | | |
| Conductor Foil Front Camera | 306AVY3601V | 1 | | | | | | | | | | | | | | | | | | |
| Conductor Tape Sub PBA | 306A1N10010 | 1 | | | | | | | | | | | | | | | | | | |
| CU Label | 306A1N10010 | | | | | | | | | | | | | | | | | | | |
| CU Label Tray | 306A1N10010 | | | | | | | | | | | | | | | | | | | |
| Display Cover Assy Black | 78PA3100010 | | | | | | | | | | | | | | | | | | | |
| Display Cover Assy White | 78PA3100030 | 1 | | | | | | | | | | | | | | | | | | |
| Display Cover Assy Lime Gold | 78PA3100020 | | | | | | | | | | | | | | | | | | | |
| Display Cover Assy Rose Gold | 78PA3100050 | | | | | | | | | | | | | | | | | | | |
| Film Kapton Audio Jack | 306L1N10010 | 2 | | | | | | | | | | | | | | | | | | |
| Film Mylar Audio Jack FPC | 306L1N10010 | 1 | | | | | | | | | | | | | | | | | | |
| Film Mylar Battery Left | 306L1N10010 | 1 | | | | | | | | | | | | | | | | | | |
| Film Mylar Battery Right | 306L1N10010 | 1 | | | | | | | | | | | | | | | | | | |
| Front Camera | 78PA3400010 | | | | | | | | | | | | | | | | | | | |
| Key Camera Black | 3125N10010 | | | | | | | | | | | | | | | | | | | |
| Key Camera Silver | 3125N10010 | 1 | | | | | | | | | | | | | | | | | | |
| Key Camera Lime Gold | 3125N10010 | | | | | | | | | | | | | | | | | | | |
| Key Camera Rose Gold | 3125N10010 | | | | | | | | | | | | | | | | | | | |
| Key Power_Volume Black | 3125N10010 | | | | | | | | | | | | | | | | | | | |
| Key Power_Volume Silver | 3125N10010 | 1 | | | | | | | | | | | | | | | | | | |
| Key Power_Volume Lime Gold | 3125N10010 | | | | | | | | | | | | | | | | | | | |
| Key Power_Volume Rose Gold | 3125N10010 | | | | | | | | | | | | | | | | | | | |
| Main Antenna Speaker Assy F3111/F3112 | 78PA3600010 | | | | | | | | | | | | | | | | | | | |
| Main Antenna Speaker Assy F3113 | 78PA3600020 | | | | | | | | | | | | | | | | | | | |
| Main Antenna Speaker Assy F3115/F3116 | 78PA3600030 | | | | | | | | | | | | | | | | | | | |
| Main Camera | 78PA3400010 | | | | | | | | | | | | | | | | | | | |
| Main Camera Lens Assy | 78PA3600010 | | | | | | | | | | | | | | | | | | | |
| NFC Antenna | 2300VY3602V | | | | | | | | | | | | | | | | | | | |
| Receiver | 2300VY3602V | | | | | | | | | | | | | | | | | | | |
| RF Cable | 7320000131V | | | | | | | | | | | | | | | | | | | |
| Rubber 2nd MIC | 302AVY3601V | | | | | | | | | | | | | | | | | | | |
| Rubber Audio Jack BTB Connector | 302AVY3602V | 1 | | | | | | | | | | | | | | | | | | |
| Rubber Front Camera BTB Connector | 302AVY3603V | 1 | | | | | | | | | | | | | | | | | | |
| Rubber LCM TP BTB Connector | 302AVY3604V | 1 | | | | | | | | | | | | | | | | | | |
| Rubber Main Camera BTB Connector | 302AVY3605V | 1 | | | | | | | | | | | | | | | | | | |
| Rubber Main MIC | 302AVY3602V | 1 | | | | | | | | | | | | | | | | | | |
| Rubber PL Sensor | 302AVY3601V | | | | | | | | | | | | | | | | | | | |
| Rubber Sub PBA BTB Connector | 302AVY3607V | 1 | | | | | | | | | | | | | | | | | | |
| Screw Cross M1.2 L2.5 Black | 27000000X00 | 11 | | 5 | 5 | | | | | | | | | | | | | | | |
| Screw TORX M1.2 L1.8 Silver | 27000000V00 | 6 | | | | | | | | | | | | | | | | | | |
| Side Deco Left Black | 251K1N10100 | | | | | | | | | | | | | | | | | | | |
| Side Deco Left Silver | 251K1N10100 | 1 | | | | | | | | | | | | | | | | | | |
| Side Deco Left Lime Gold | 251K1N10300 | | | | | | | | | | | | | | | | | | | |
| Side Deco Left Rose Gold | 251K1N10400 | | | | | | | | | | | | | | | | | | | |
| Side Deco Right Black | 254FYV3601V | | | | | | | | | | | | | | | | | | | |
| Side Deco Right Silver | 254FYV3603V | 1 | | | | | | | | | | | | | | | | | | |
| Side Deco Right Lime Gold | 254FYV3600V | | | | | | | | | | | | | | | | | | | |
| Side Deco Right Rose Gold | 254FYV3613V | | | | | | | | | | | | | | | | | | | |
| Side Key FPC Assy | 78PA3600010 | | | | | | | | | | | | | | | | | | | |
| SIM Tray Dual | 302AVY3602V | | | | | | | | | | | | | | | | | | | |
| SIM Tray Single | 302AVY3601V | | | | | | | | | | | | | | | | | | | |
| Spongy Main Camera BTB Connector | 303MYV3601V | | | | | | | | | | | | | | | | | | | |
| Spongy Speaker Main MIC | 303MYV3601V | | | | | | | | | | | | | | | | | | | |
| Sub PBA Assy F3111/F3112 | 78PA3300010 | | | | | | | | | | | | | | | | | | | |
| Sub PBA Assy F3113/F3115/F3116 | 78PA3300020 | | | | | | | | | | | | | | | | | | | |
| Washer Nylon Screw | 306S1N10010 | 2 | | | | | | | | | | | | | | | | | | |
| Water Intrusion Label | 62P500001V | | | | | | | | | | | | | | | | | | | |
| Water Intrusion Label Rectangle | 62VY580001V | | | | | | | | | | | | | | | | | | | |

Mandatory replacement parts for refurbishment.

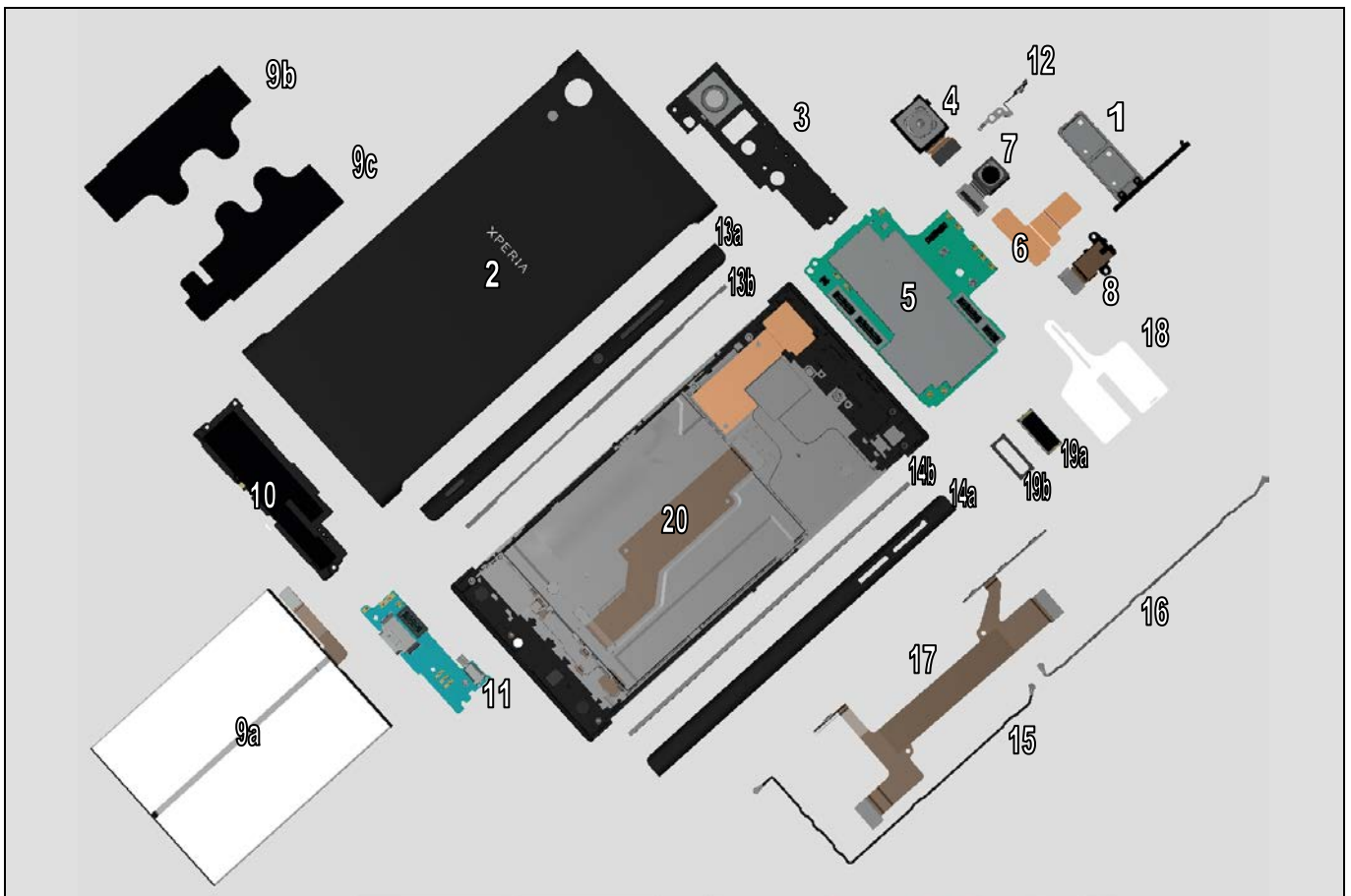
Parts that is required to replace in addition to target replacement parts.

Number in the cells indicates parts require replacing for target part.

4 Disassembly

The disassembly is done in the following order:

1. Cap Tray
2. Battery Cover Assy
3. Antenna Box Assy BT/Wi-Fi
4. Main Camera
5. Main PBA
6. Conductive Tape Front Camera
7. Front Camera
8. Audio Jack FPC
9. Battery (a) & Film Mylar Battery Left (b) & Film Mylar Battery Right (c)
10. Speaker Box Assy
11. Sub PBA
12. Spring Main Camera
13. Side Panel Key (a) & Sponge Front Assy Right Side (b)
14. Side Panel Cap (a) & Sponge Front Assy Left Side (b)
15. RF Cable Black
16. RF Cable White (G3121, G3123, G3125) & RF Cable Gray (G3112, G3116)
17. Side Key FPC Assy
18. CU Label Tray
19. Ear Speaker (a) & Adhesive Ear Speaker (b)
20. Front Cover Assy



Disassembly

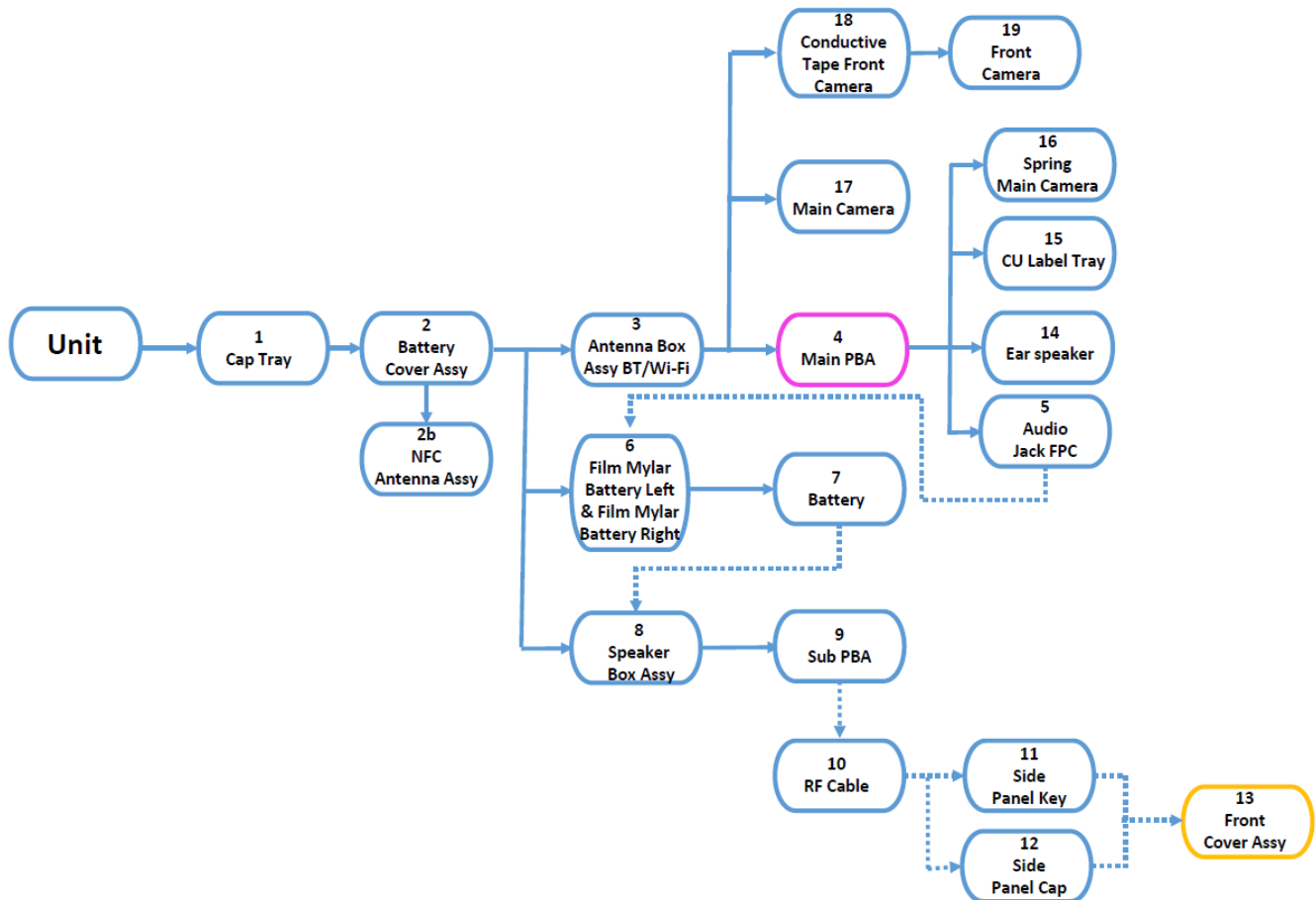
Disassembly Quick Reference Chart is embedded.

Click the icon to open the file.



Required disassembly procedures of specific part removing can be identified by Disassembly Quick Reference Chart.

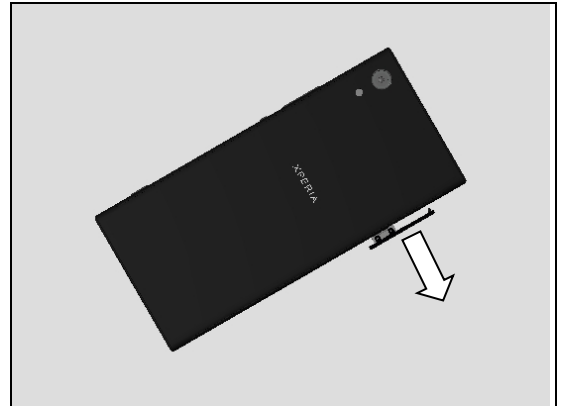
The following is the sample how to identify the procedures.



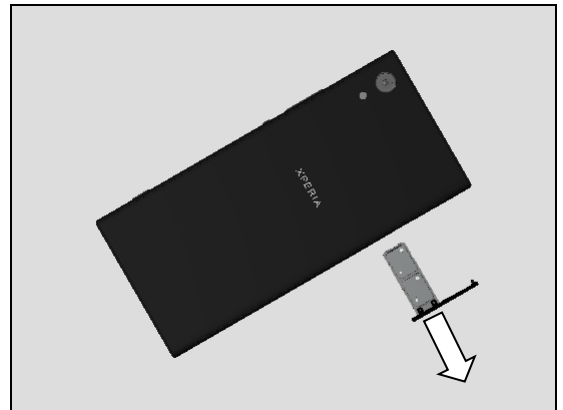
Disassembly

4.1 Cap Tray

Open the Cap Tray as indicating position.



Remove it by fingers.



4.2 Battery Cover Assy

Note!

**Before removing the Battery Cover Assy,
Check if it has any damage such as dimple/dent.
Due to dimple/dent on Battery Cover Assy, may indicate
inside battery damaged.
Check the Battery condition to follow the "6 Battery
Reuse instruction".**



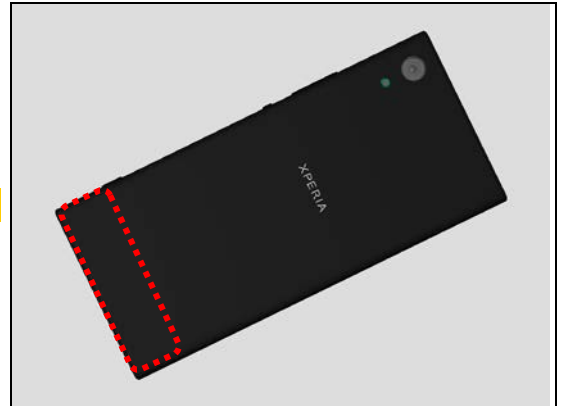
Prepare the Hot Air Device in place with setting temperature at 80°C.

Calibration of Hot Air Gun is required weekly!



Disassembly

Only the lower part of Battery Cover could be heated!

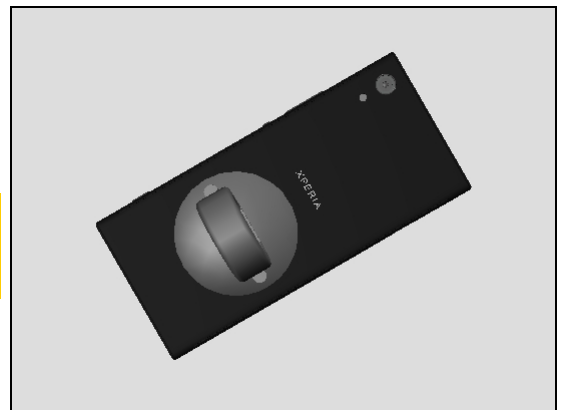


Place Hot Air Gun nozzle at approximate 1cm above the bottom side of the unit as indicated area.
Heat for 45 seconds.

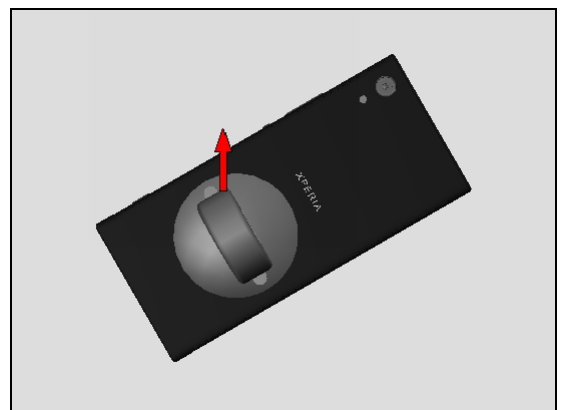


Place the suction cap on the Battery Cover Assy as position shown.

**Do not put the suction cup onto the upper and middle area of the Battery Cover Assy for disassembly.
NFC Antenna could be damaged.**



Pull the suction cap upwards to make the gap for inserting the Flexible Disassembly tool.



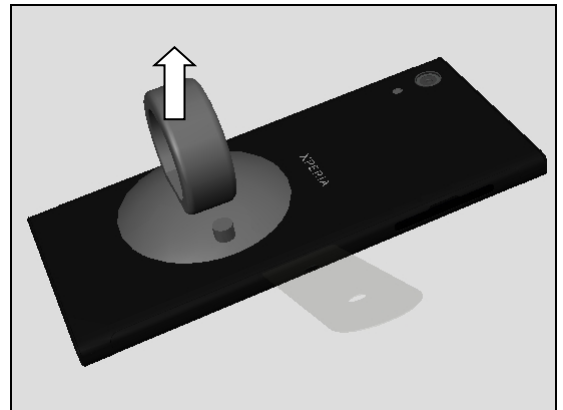
Disassembly

Insert the Flexible Disassembly tool between Battery Cover Assy and Display Cover Assy as shown position in picture.

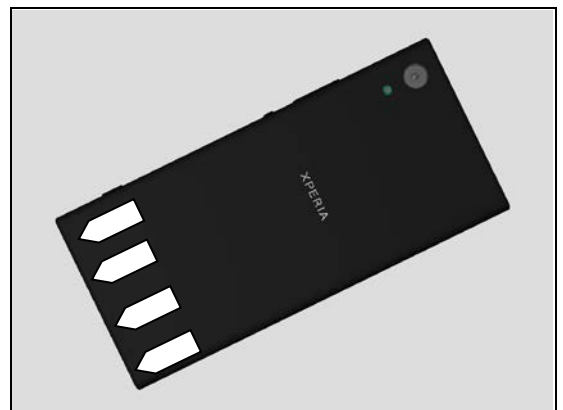
Be careful not to insert too deep to damage the Battery!



Remove the Suction Cup.



There are four hooks locate on the bottom side of the Battery Cover Assy.

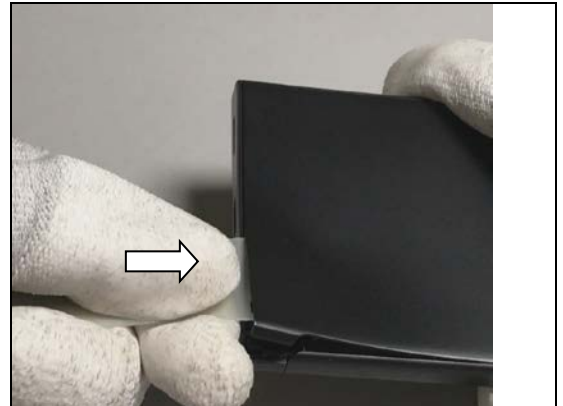


Slide the Flexible Disassembly tool to the bottom side to detach this side of Battery Cover Assy.



Disassembly

Insert the Flexible Disassembly tool deeper as shown in picture.



Slide and twist the Flexible Disassembly tool to unsnap the bottom hooks and detach the Adhesive Battery Cover Bottom.



After the bottom side is released, hold the bottom side of Battery Cover Assy by fingers. Slowly lift to detach the Battery Cover Assy.

Note! During this action the Battery Cover Assy may deform, if not damaged it can be reused.

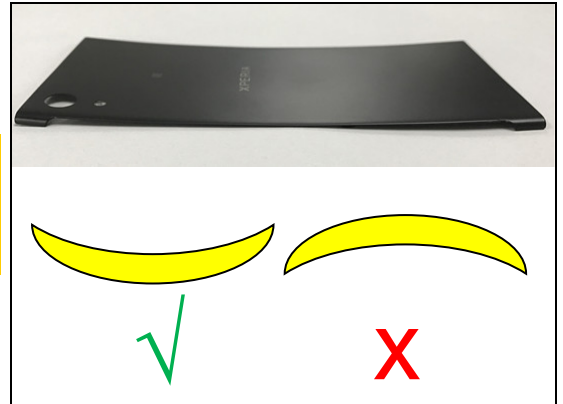


While detaching the Battery Cover Assy, Thumb must hold the NFC cooper to prevent it peeling off

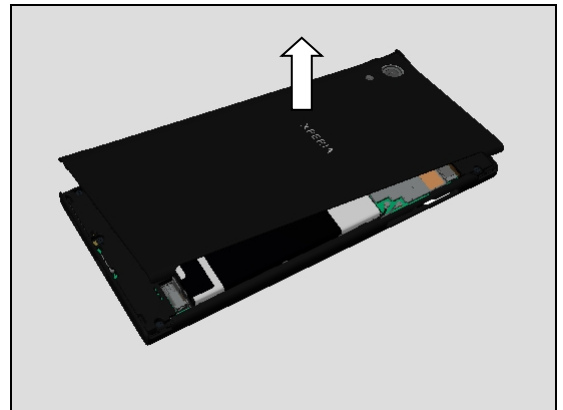


Disassembly

Until Battery Cover Assy is fully removed. Note! During this action the Battery Cover Assy may get deformed! Inspect hooks have no damage and Battery Cover Assy deform curve as sample picture shown can be reused!

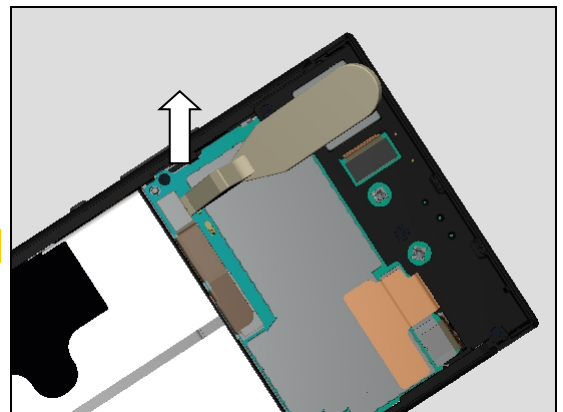


Remove the Battery Cover Assy.



Disconnect the Battery connector by using the Front Opening Tool.

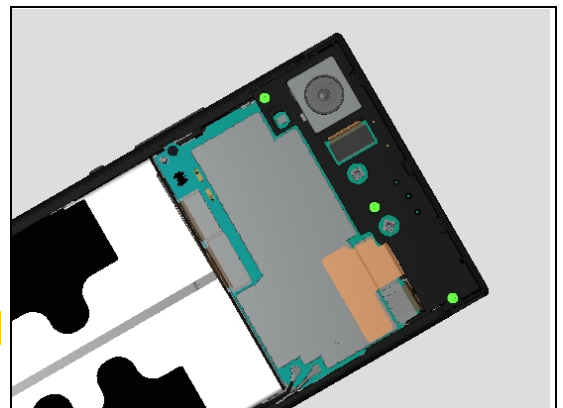
Be careful not to damage components on the Main PBA!



4.3 Antenna Box Assy BT/Wi-Fi

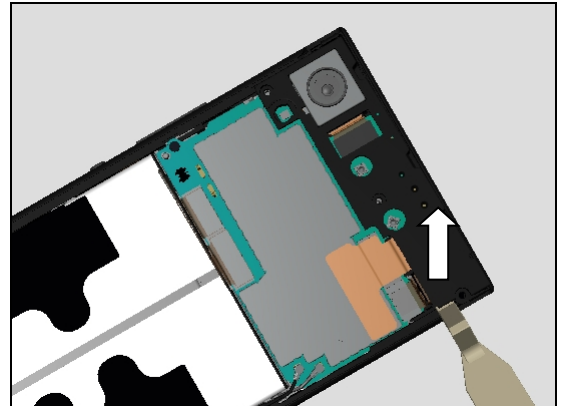
Remove the three screw by using a screwdriver with Bits JCIS No.0.

Scrap! Not to be reused!



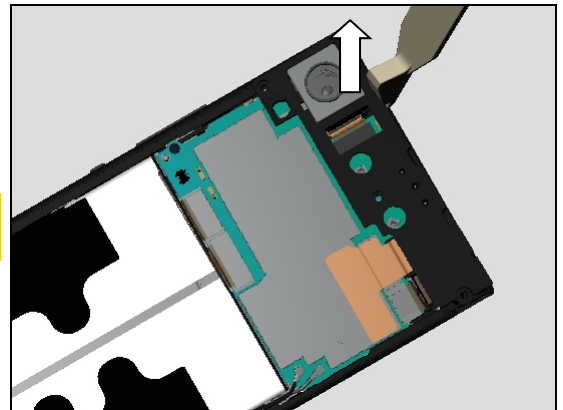
Disassembly

Unsnap the hook to release this side of Antenna Box Assy BT/Wi-Fi using the Front Opening Tool.

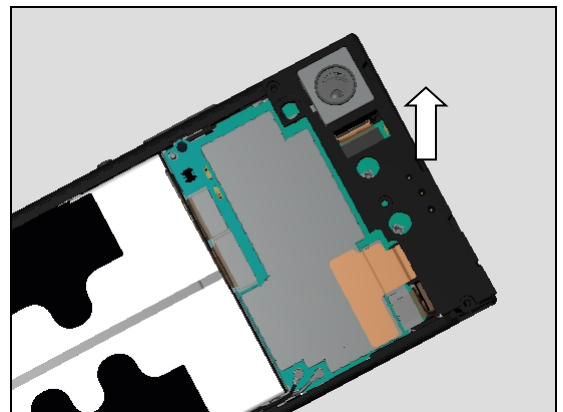


Release the top side as shown position.

Inspect the pattern to make sure no scratch of Antenna Box Assy BT/Wi-Fi!

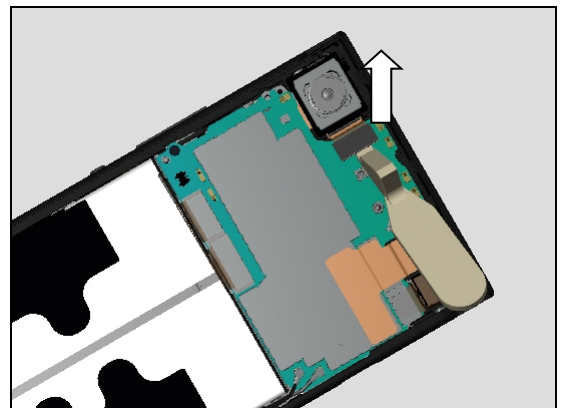


Remove the Antenna Box Assy BT/Wi-Fi.



4.4 Main Camera

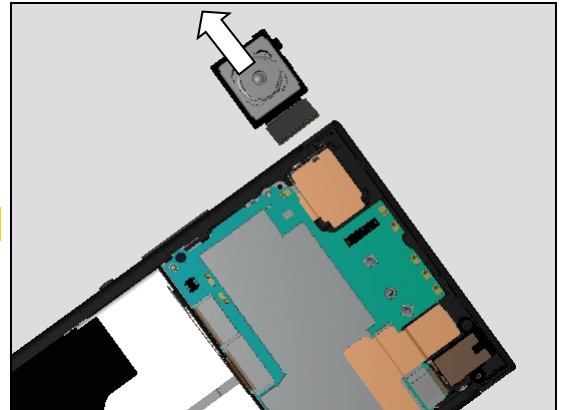
Disconnect BtB connector of Main Camera using the Front Opening Tool.



Disassembly

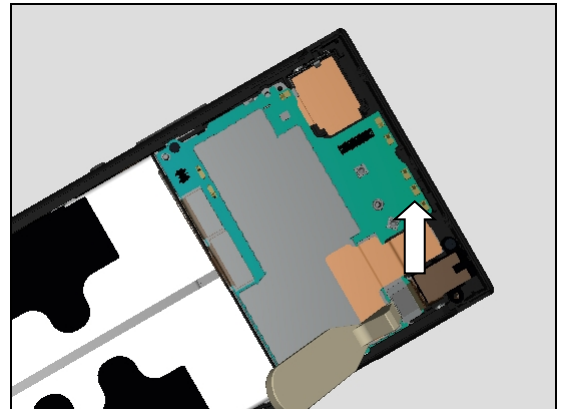
Remove the Main Camera from its cavity by fingers.

Do not touch the lens side of the Main Camera!



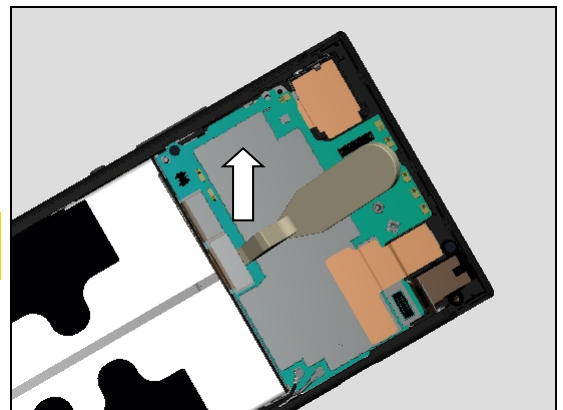
4.5 Main PBA

Disconnect the BtB connector of Audio Jack FPC carefully by using the Front Opening Tool.



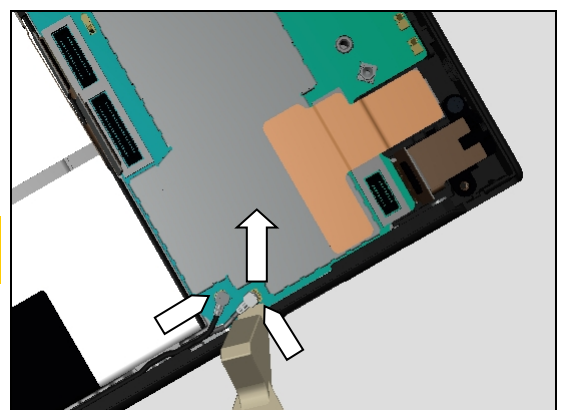
Disconnect the BtB connectors of Display FPC and Side Key FPC.

Be Careful of not to damage components on the Main PBA!



Disconnect the RF coax connectors by the Front Opening Tool from shown position.

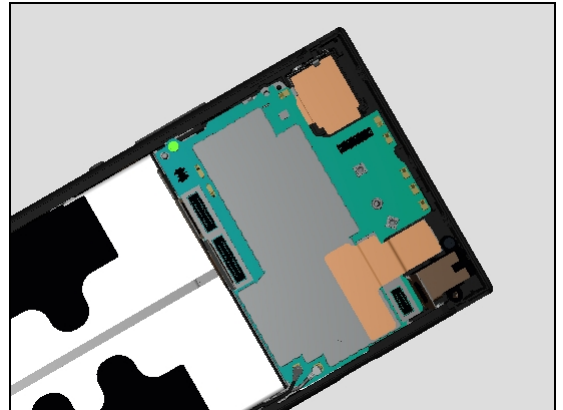
Be Careful of not to damage components on the Main PBA!



Disassembly

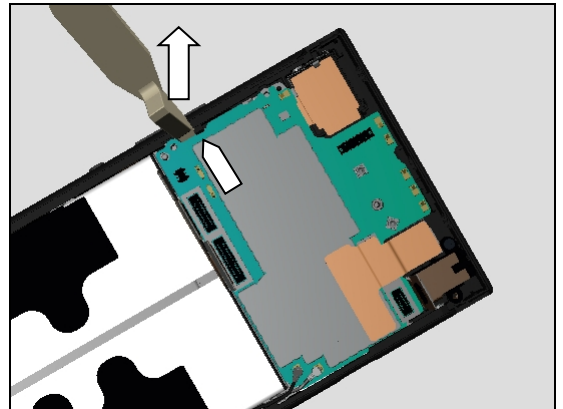
Remove the Screw Cross M1.2 L2.62 Black by using a screwdriver with Bits JCIS No.0.

Scrap! Not to be reused!



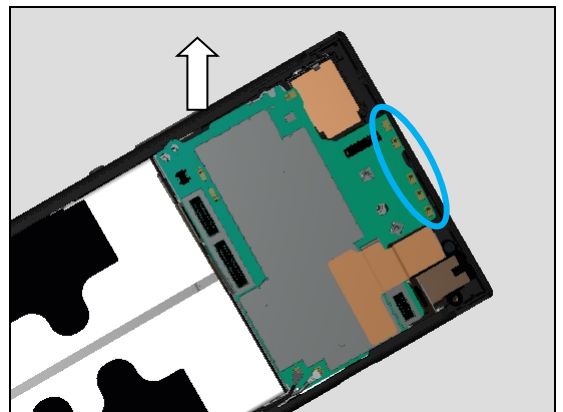
Unsnap this hook by using the Front Opening Tool as shown in picture.

Do not damage components on the Main PBA!

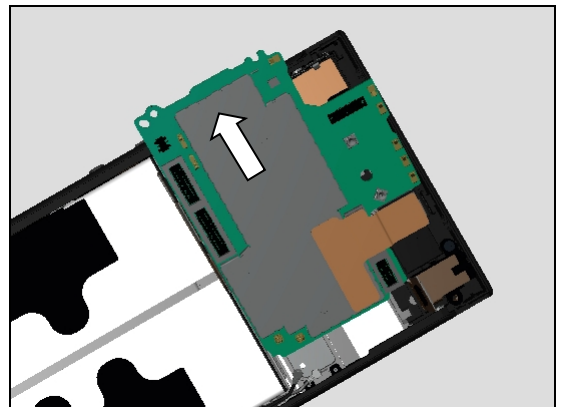


Lift up this side to release the Main PBA as shown in picture.

Be careful of not to touch the spring pins!



Remove the Main PBA as shown direction in picture.

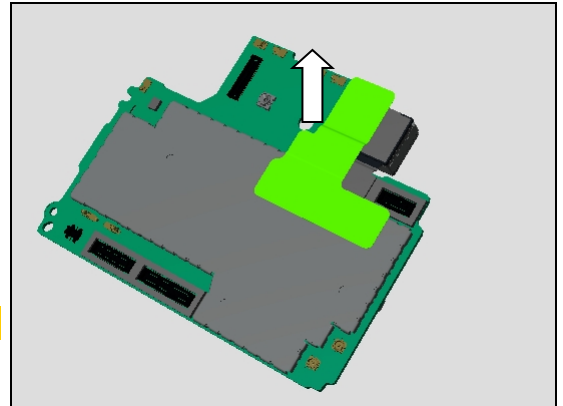


Disassembly

4.6 Conductive Tape Front Camera

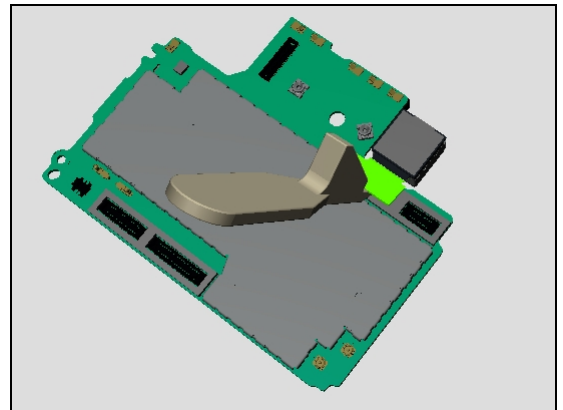
Remove the Conductive Tape Front Camera with Plastic Tweezers.

Scrap! Not to be reused!



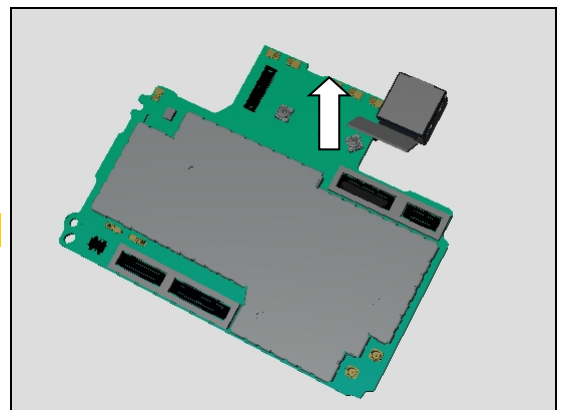
4.7 Front Camera

Disconnect the BtB connector of Front Camera.



Remove the Front Camera gently.

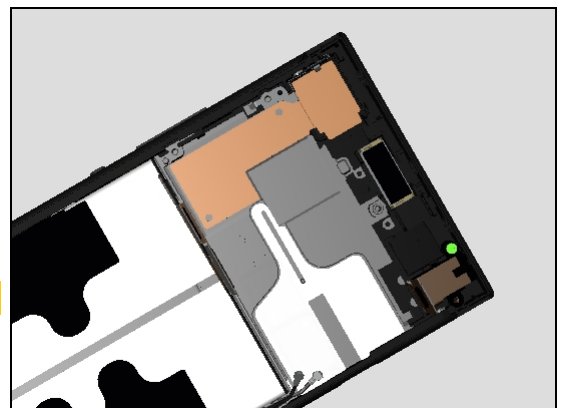
Do not touch the lens side of the Main Camera!



4.8 Audio Jack FPC

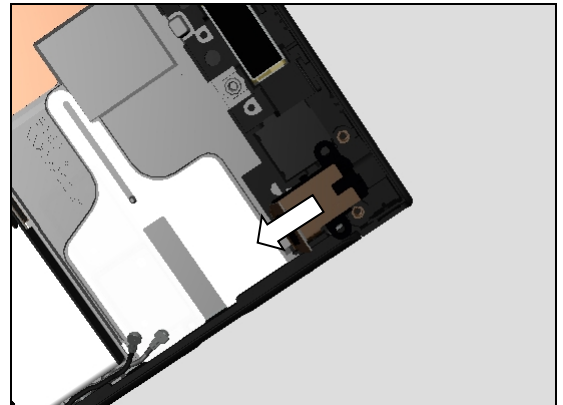
Remove the screw by using a screwdriver with Bits JCIS No.0.

Scrap! Not to be reused!

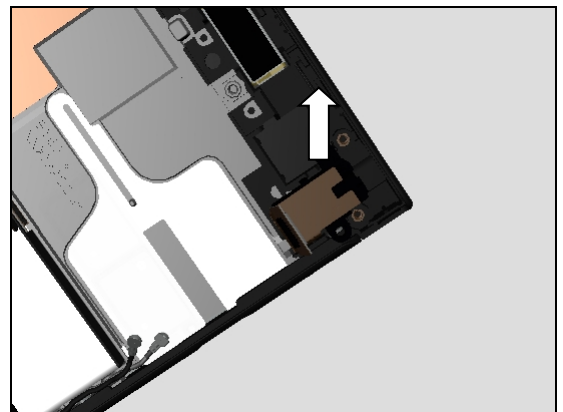


Disassembly

Release the Audio Jack body from Audio Jack hole as shown direction gently.

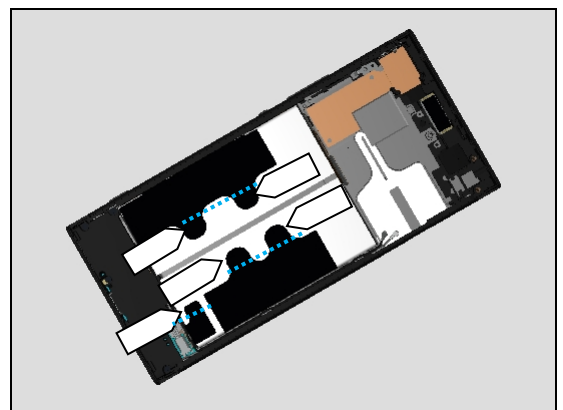


Remove the Audio Jack FPC.

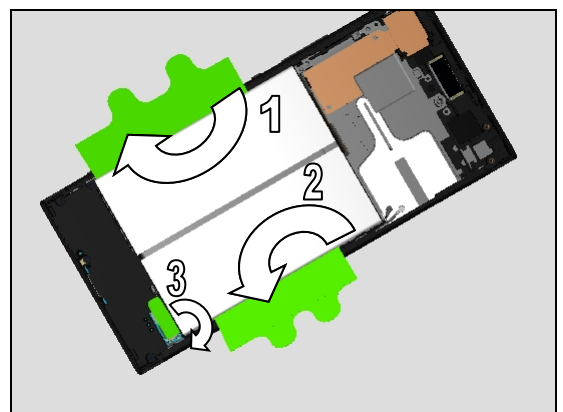


4.9 Battery & Film Mylar Battery Left & Film Mylar Battery Right

Identify the five release tabs as shown in picture.



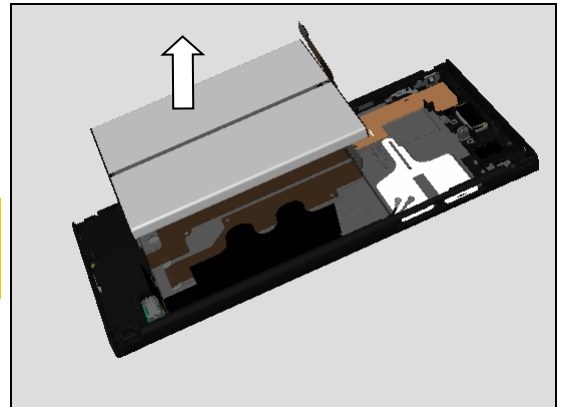
Pull to detach the Mylar's as shown direction in picture by fingers.



Disassembly

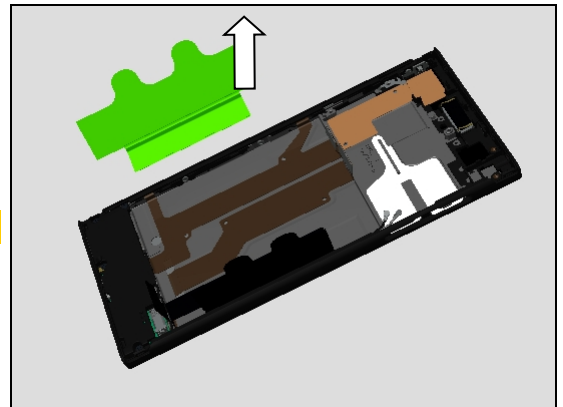
Remove the battery carefully.

Note!
Follow Chapter 6. Battery Reuse Instruction before installing the battery.



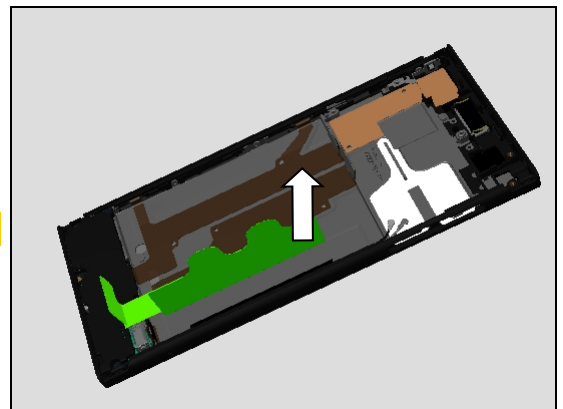
Pull to detach the Film Mylar Battery Left with fingers.

Scrap! Cannot be reused!



Pull to detach the Film Mylar Battery Right.

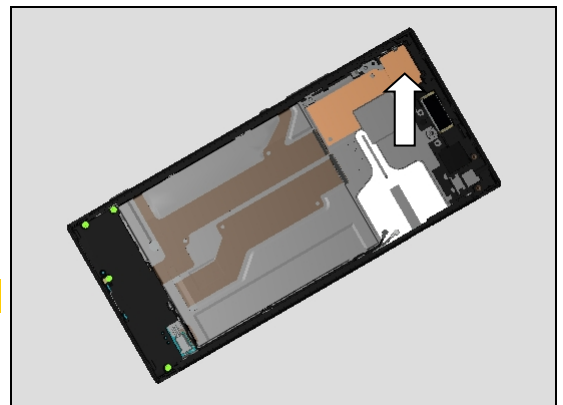
Scrap! Cannot be reused!



4.10 Speaker Box Assy

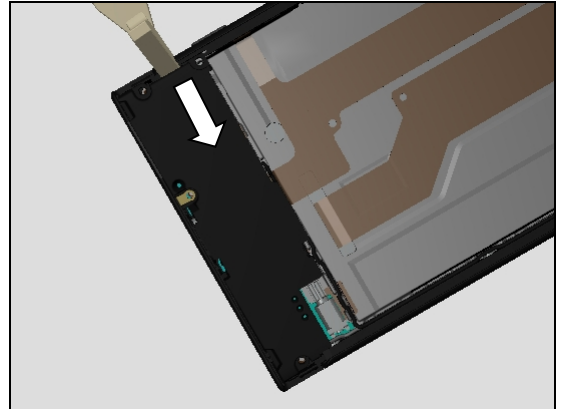
Remove the four screws by using a screwdriver with Bits JCIS No.0.

Scrap! Not to be reused!

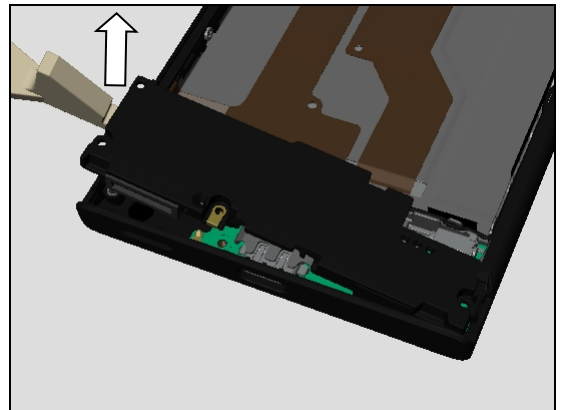


Disassembly

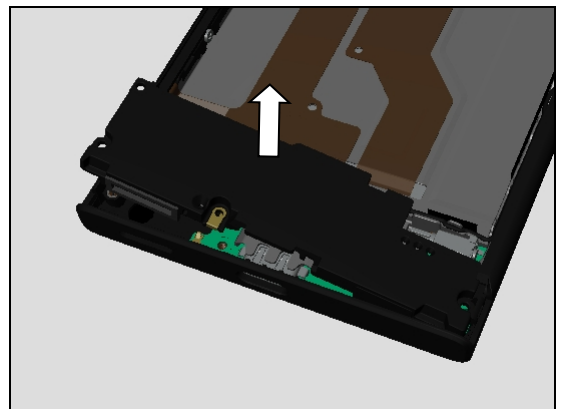
Insert the Front Opening Tool as shown position.



Pull upwards to release the snap hook of Speaker Box Assy.

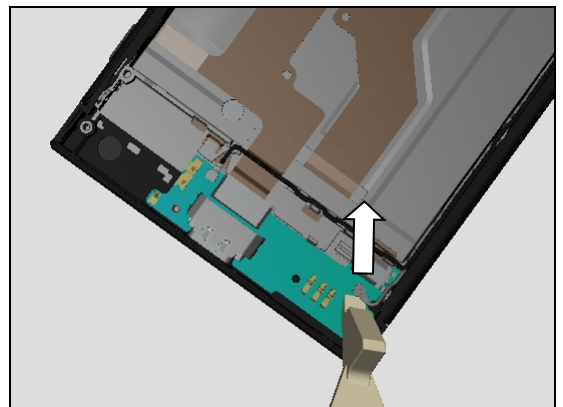


Remove the Speaker Box Assy



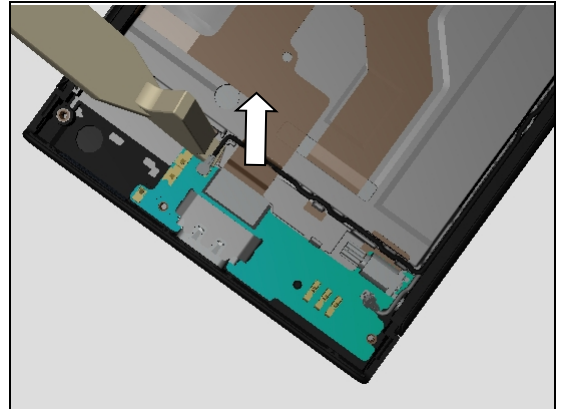
4.11 Sub PBA

Disconnect the RF Cable connector.

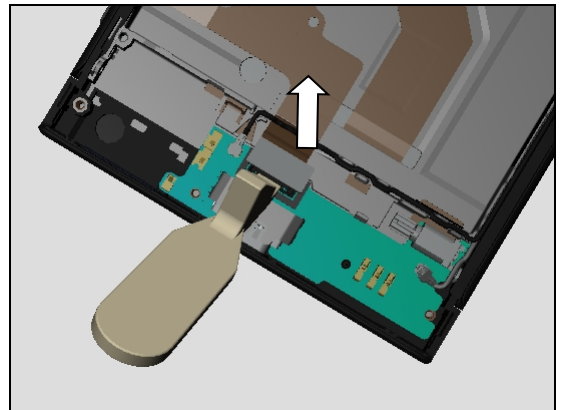


Disassembly

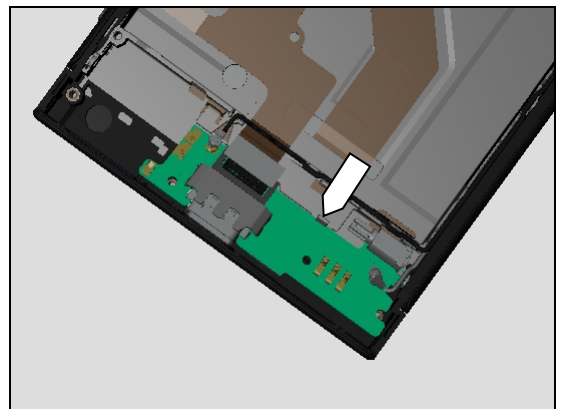
Disconnect the second RF Cable connector.
(For G3121, G3123, G3125)



Disconnect the BtB connector of the Side Key FPC Assy.

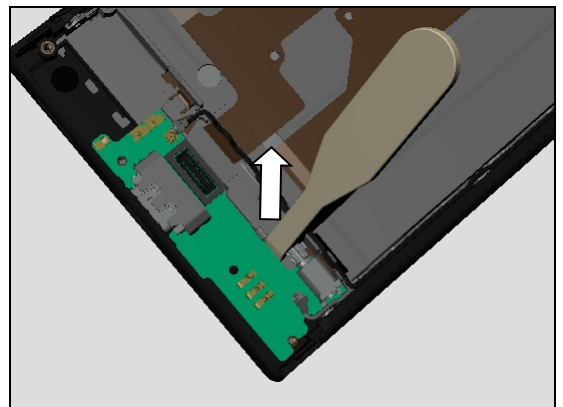


There is one snap hook secure the Sub PBA.



Insert the Front Opening Tool at this position underneath the Sub PBA and unsnap the Sub PBA as shown in picture.

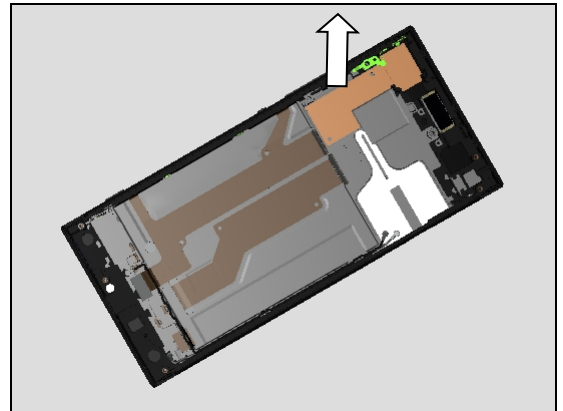
Be careful with USB port during this action!



Disassembly

4.12 Spring Main Camera

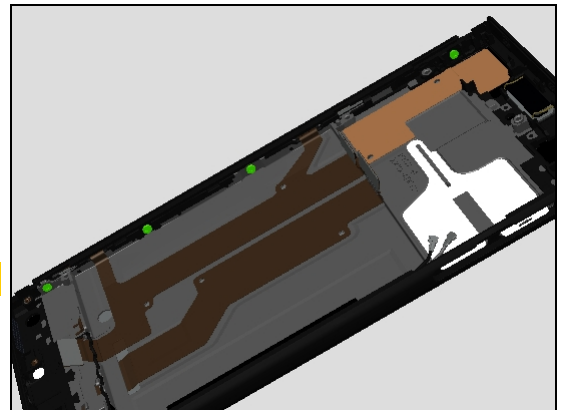
Remove the Spring Main Camera with fingers carefully.



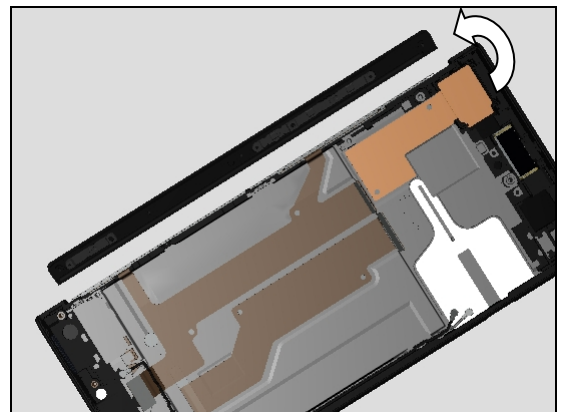
4.13 Side Panel Key

Remove the four screw by T5.

Scrap! Cannot be reused!



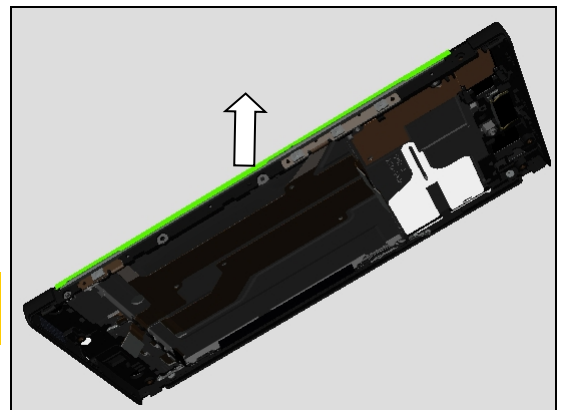
Rotate the Side Panel Key as shown to detach and remove the Side Panel Key from adhesive underneath.



4.14 Sponge Front Assy Right Side

Detach to remove the Sponge Front Assy Right Side carefully.

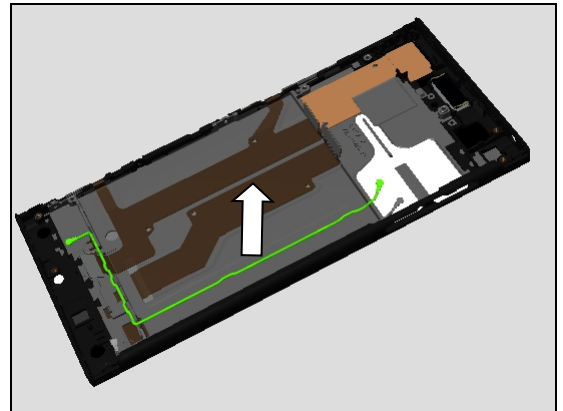
Make sure all remaining residue have been removed!
Scrap! Cannot be reused!



Disassembly

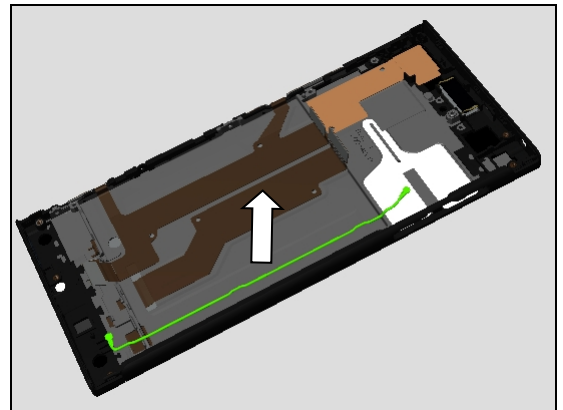
4.15 RF Cable Black (For G3121, G3123, G3125)

Remove the RF Cable Black from its cavity by fingers.



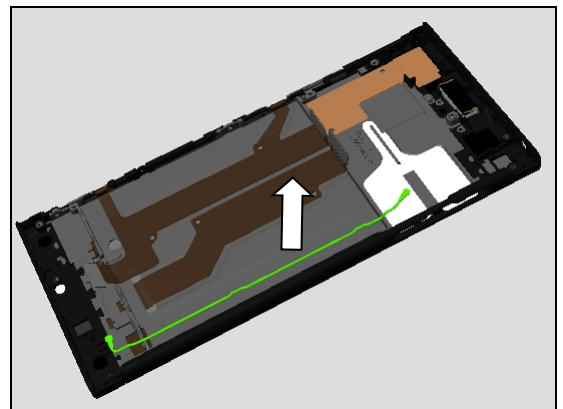
4.16 RF Cable White (For G3121, G3123, G3125)

Remove the RF Cable White from its cavity by fingers.



4.17 RF Cable Gray (For G3112, G3116)

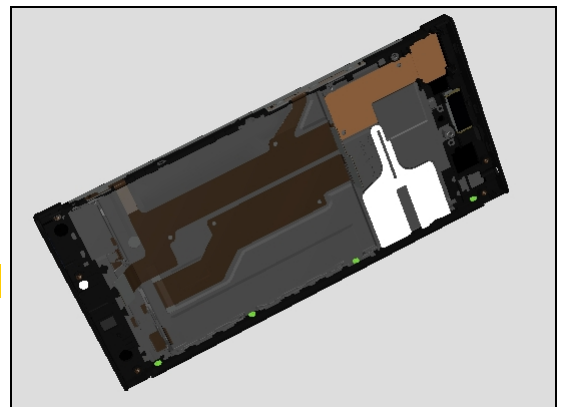
Remove the RF Cable Gray from its cavity by fingers.



4.18 Side Panel Cap

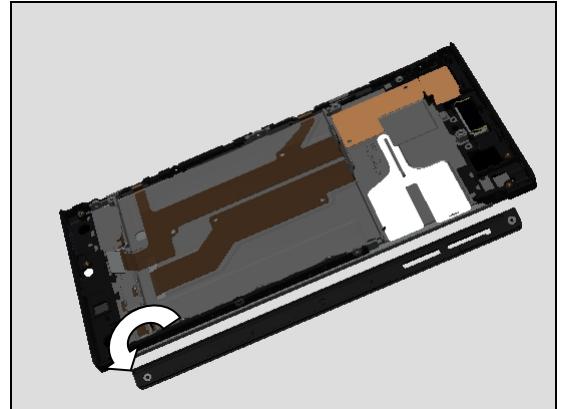
Remove the four screw by T5.

Scrap! Cannot be reused!



Disassembly

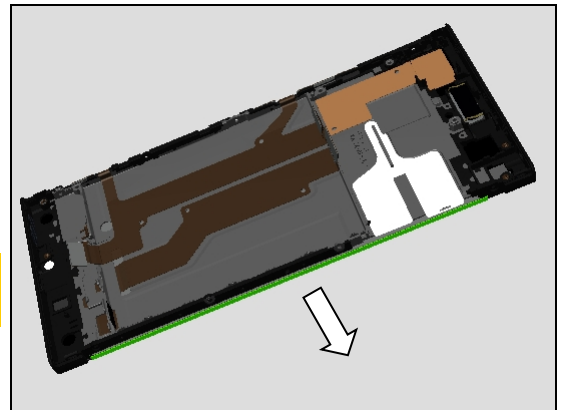
Rotate the Side Panel Cap as shown to detach and remove the Side Panel Key from adhesive underneath.



4.19 Sponge Front Assy Left Side

Detach to remove the Sponge Front Assy Left Side carefully.

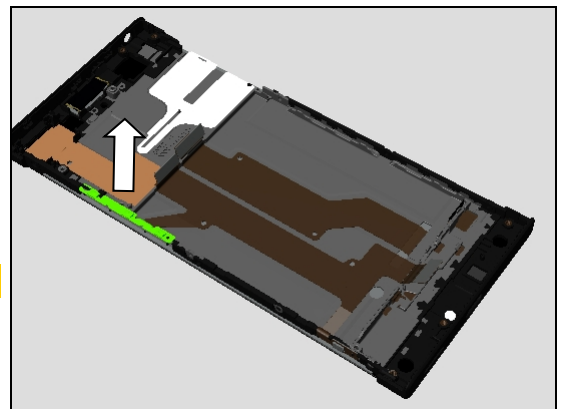
**Make sure all remaining residue have been removed!
Scrap! Cannot be reused!**



4.20 Side Key FPC Assy

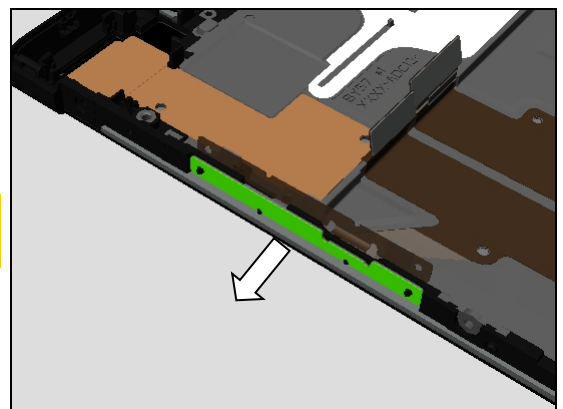
Detach the Power & Volume switch FPC by tweezers.

Be careful not to damage the FPC!



Remove the Adhesive Side Key FPC Power Key carefully.

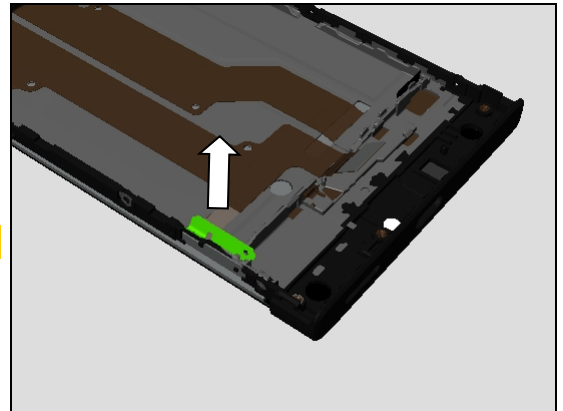
**Make sure all remaining residue have been removed!
Scrap! Cannot be reused!**



Disassembly

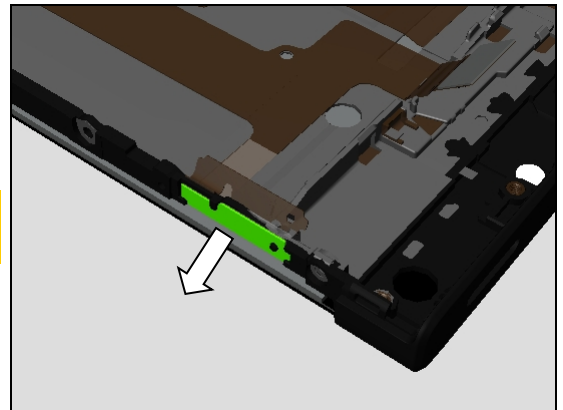
Detach the Camera switch FPC by tweezers.

Be careful not to damage the FPC!



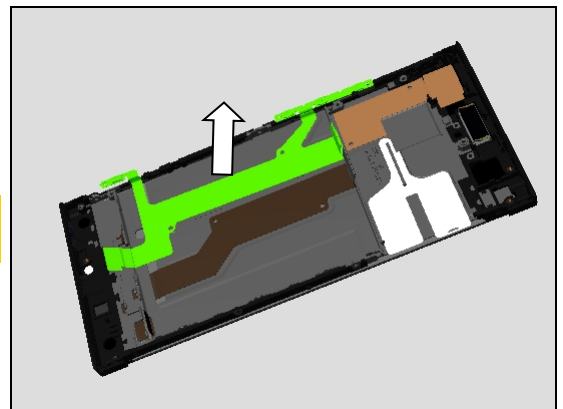
Remove the Adhesive Side Key FPC Camera Key carefully.

**Make sure all remaining residue have been removed!
Scrap! Cannot be reused!**



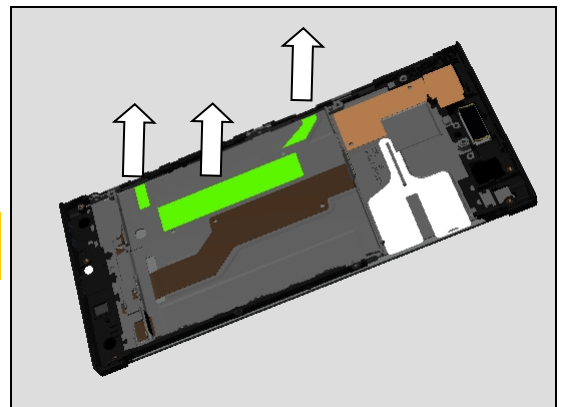
Detach to remove the Side Key FPC Assy.

Inspect the Side Key FPC Assy to make sure no cosmetic damage!



Remove the Adhesive Side Key FPC Main / Adhesive Side Key FPC B / Adhesive Side Key FPC C carefully.

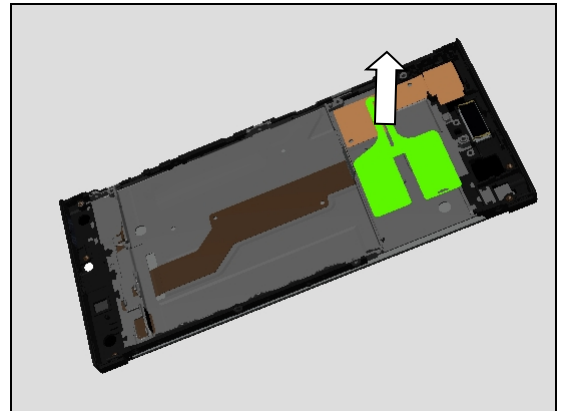
Make sure all remaining adhesive residue have been removed!



Disassembly

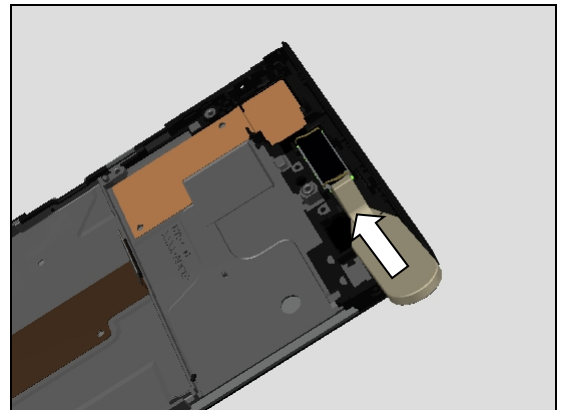
4.21 CU Label Tray

Remove CU Label Tray with fingers.

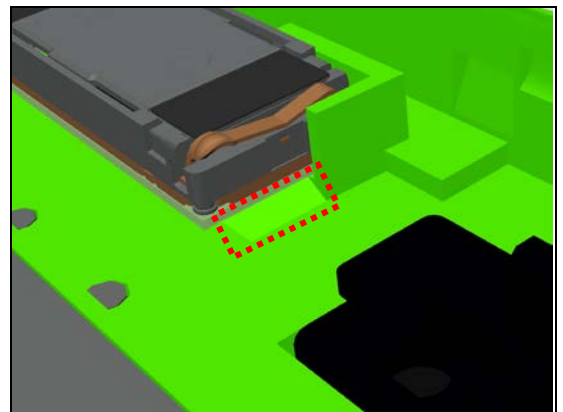


4.22 Ear Speaker & Adhesive Ear Speaker

Insert the Front Opening Tool into the cavity.

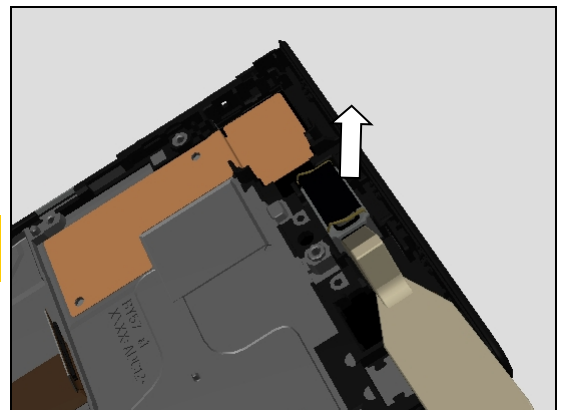


Insert the Front Opening Tool into the cavity as shown position in picture.



Lift up the Front Opening Tool to remove the Ear Speaker.

Scrap the Receiver once disassembled! Not to be reused!

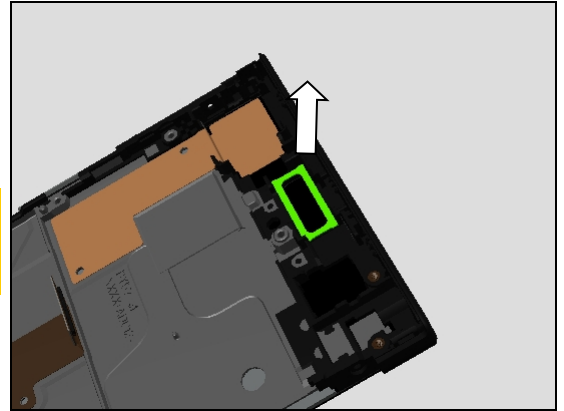


Disassembly

Detach to remove the Adhesive Ear Speaker by using the Blunt-tip Plastic Tweezers.

Scrap! Not to be reused!

Make sure all remaining adhesive residue have been removed!

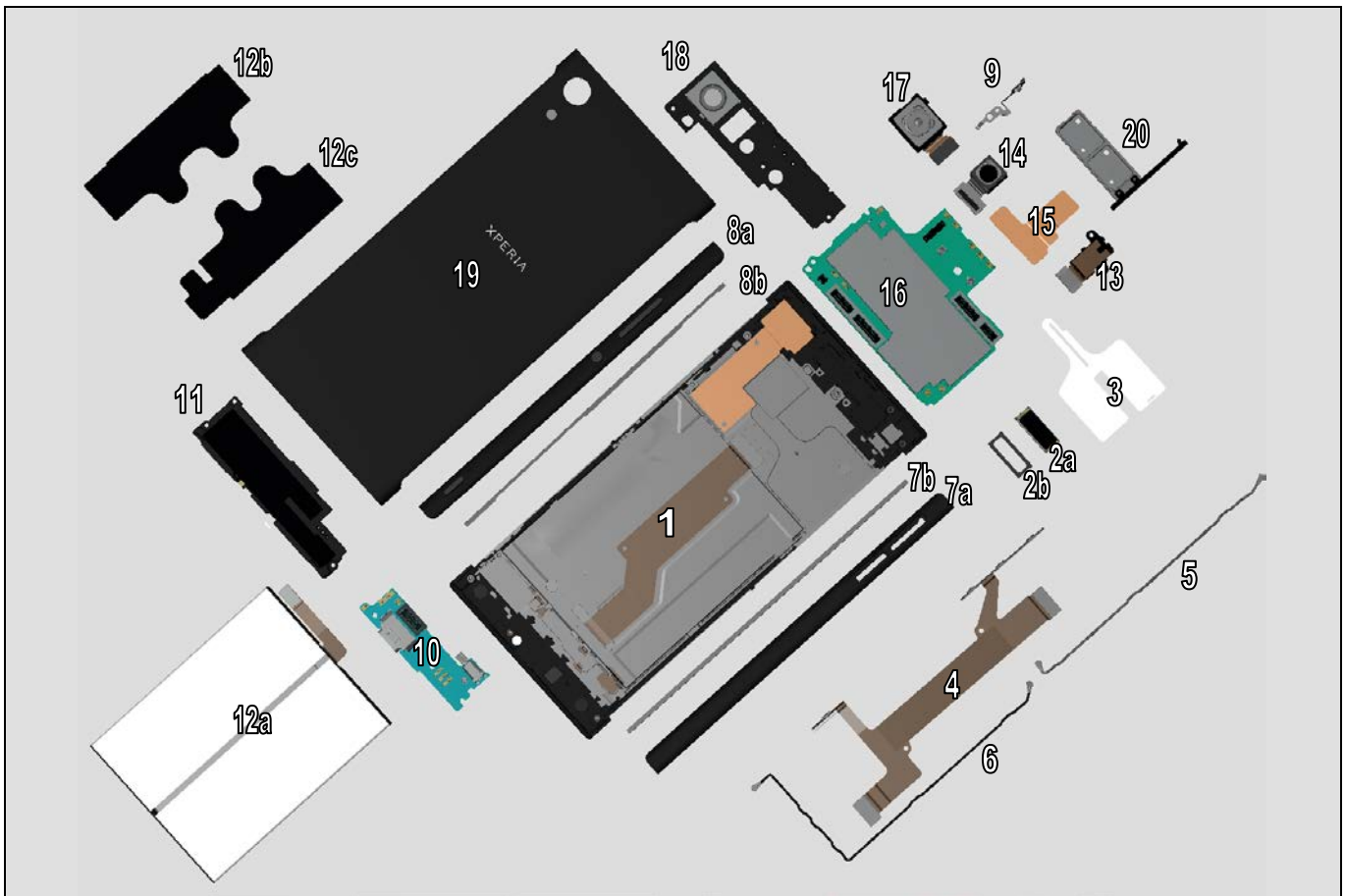


5 Reassembly

The reassembly is done in the following order:

1. Front Cover Assy
2. Ear Speaker (a) & Adhesive Ear Speaker (b)
3. CU Label Tray
4. Side Key FPC Assy
5. RF Cable White (G3121, G3123, G3125) & RF Cable Gray (G3112, G3116)
6. RF Cable Black
7. Side Panel Cap (a) & Sponge Front Assy Left Side (b)
8. Side Panel Key (a) & Sponge Front Assy Right Side (b)
9. Spring Main Camera
10. Sub PBA
11. Speaker Box Assy

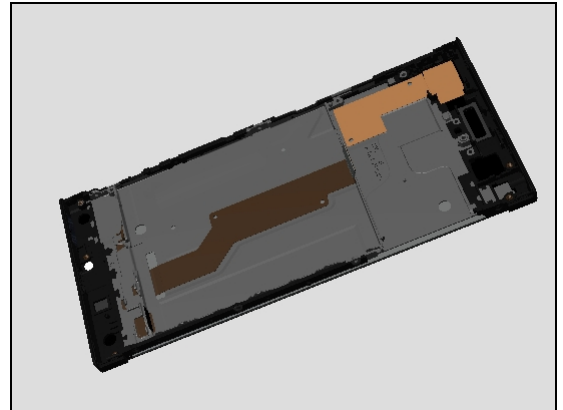
12. Battery (a) & Film Mylar Battery Left (b) & Film Mylar Battery Right (c)
13. Audio Jack FPC
14. Front Camera
15. Conductive Tape Front Camera
16. Main PBA
17. Main Camera
18. Antenna Box Assy BT/Wi-Fi
19. Battery Cover Assy
20. Cap Tray



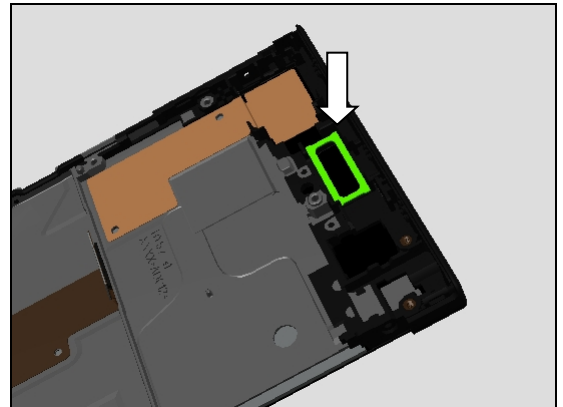
Reassembly

5.1 Front Cover Assy & Ear Speaker & Adhesive Ear Speaker

Prepare Front Cover Assy in place.

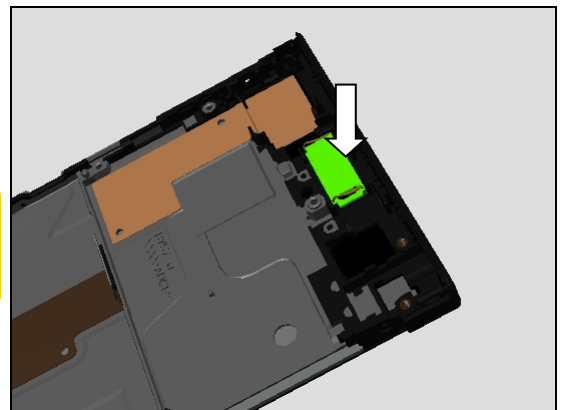


Prepare a new Adhesive Ear Speaker and attach it into cavity properly as shown in picture.



Prepare a new Ear Speaker and press into the cavity with correct direction.

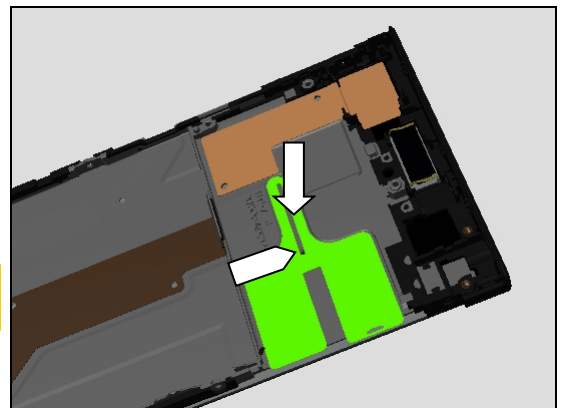
Note the correct orientation of the Ear Speaker contact springs to be installed as shown in picture!
Be careful! Do not press contact springs when pressing.



5.2 CU Label Tray

Place the CU Label Tray on its proper position as shown in picture.

Note the correct position of the block pin in the CU Label Tray slot!



Reassembly

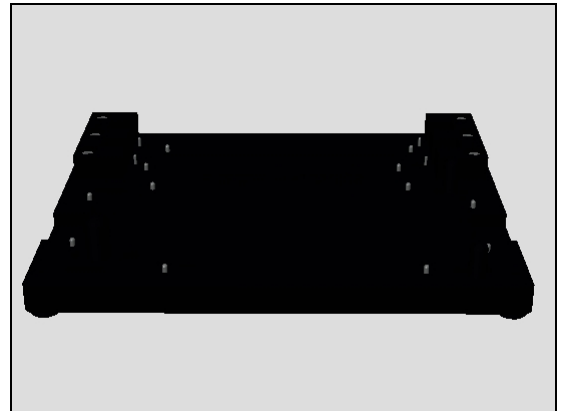
5.3 Sponge Front Assy Right Side & Sponge Front Assy Left Side

Prepare Panels Adhesive Fixture (1307-4982) in place.

Place a new Sponge Front Assy Right Side & Sponge Front Assy Left Side with protection film onto the Panels Adhesive Fixture in alignment with the position pins as shown in picture.

Choose the correct for position of Sponge Front Assy Right & Left Side as shown in picture.

Note the correct orientation to be installed as shown in picture!



Insert the Front Cover Assy onto the Panels Adhesive Fixture in alignment with the position pins as shown in picture and press to make the sponge securely attached.

Note the correct orientation to be installed as shown in picture!

Use “two dots” mark on the fixture matches the “Sony” Logo on the head of the Unit—’ to identify the correct orientation.



Insert the Front Cover Assy onto the Panels Adhesive Fixture in alignment with the position pins as shown in picture and press to make the sponge securely attached.

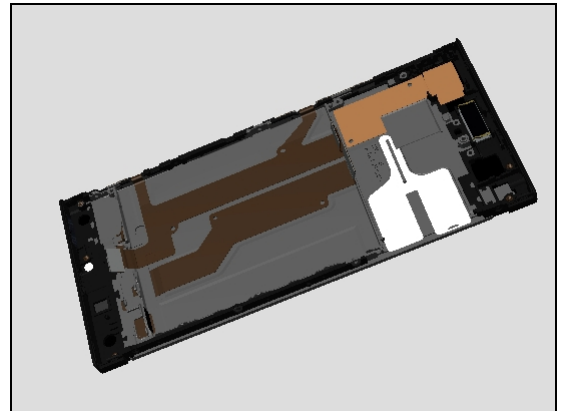
Note the correct orientation to be installed as shown in picture!

Use “two dots” mark on the fixture matches the “Sony” Logo on the head of the Unit—’ to identify the correct orientation.



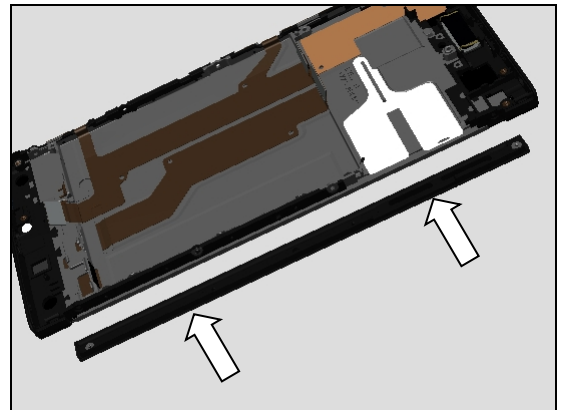
Reassembly

Remove the Unit from the fixture and remove the protect film.

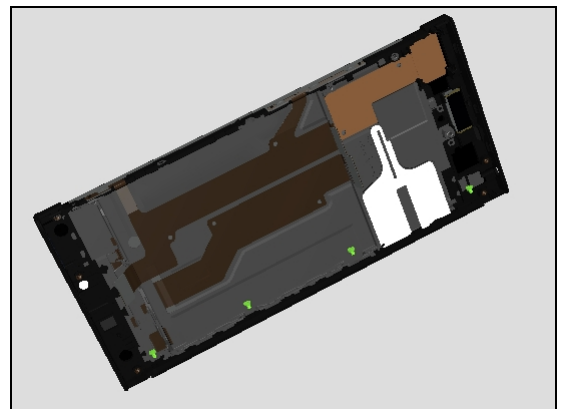


5.4 Side Panel Cap

Snap the Side Panel Cap on the side of the Unit by using the four screw nut holes as guiding holes.



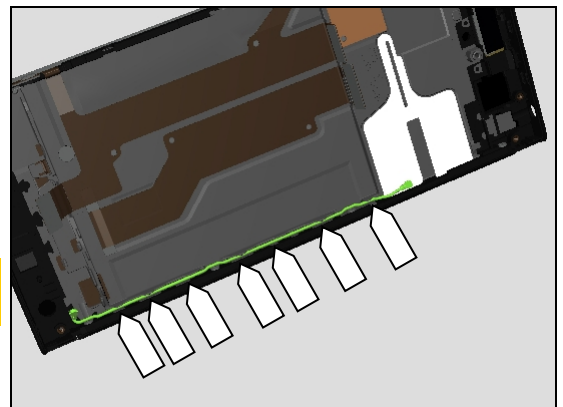
Apply 6Ncm torque when tightening the four new Screw TORX M1.2 L1.85 by using a T5 screwdriver.



5.5 RF Cable White (For G3121, G3123, G3125)

Insert the RF Cable White into its cavity as shown in picture.

Note! Make sure the seven position of the RF Cable White are inserted into the clips properly.

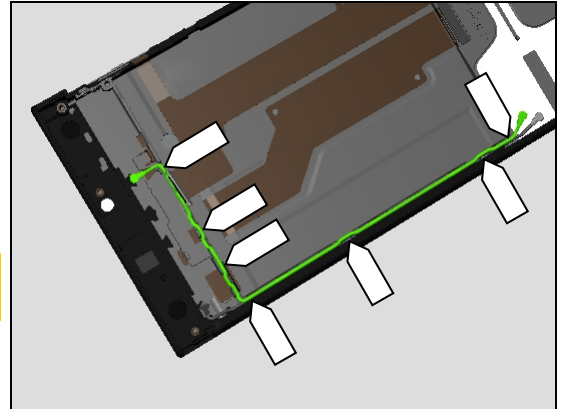


Reassembly

5.6 RF Cable Black (For G3121, G3123, G3125)

Insert the RF Cable Black into its cavity as shown in picture.

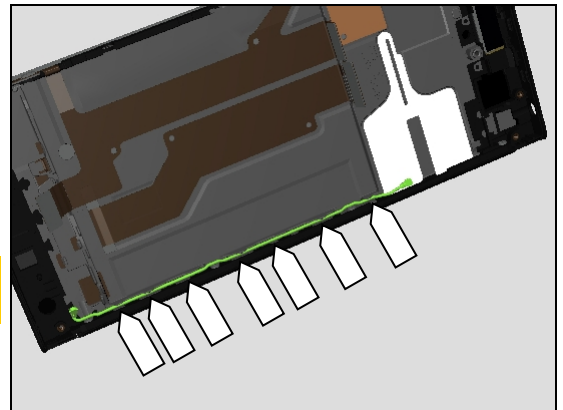
Note! Make sure the seven position of the RF Cable Black are inserted into the clips properly.



5.7 RF Cable Gray (For G3112, G3116)

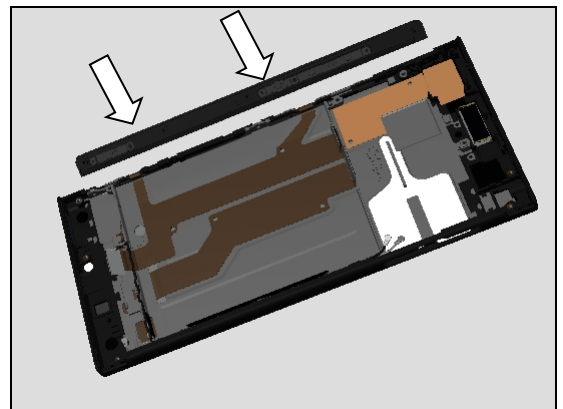
Insert the RF Cable Gray into its cavity as shown in picture.

Note! Make sure the seven position of the RF Cable White are inserted into the clips properly.

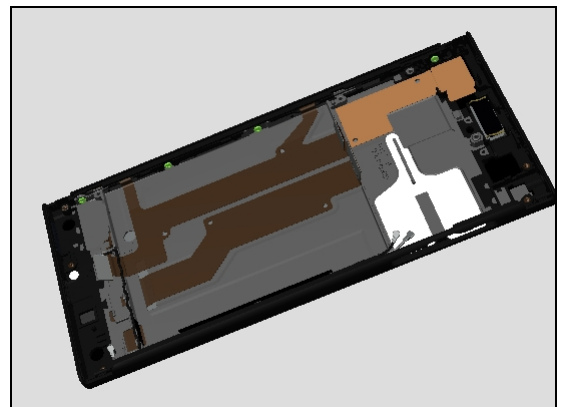


5.8 Side Panel Key

Snap the Side Panel Key on the side of the Unit by using the four screw nut holes as guiding holes.



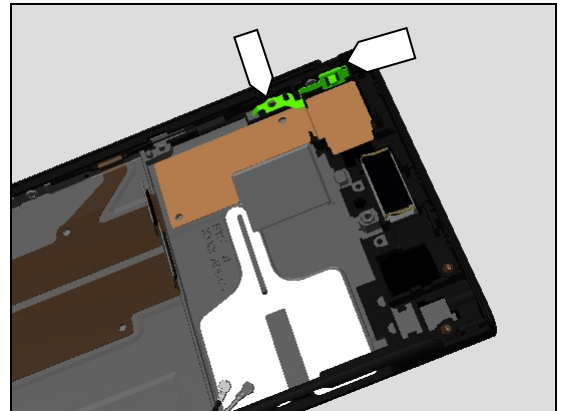
Apply 6Ncm torque when tightening the four new Screw TORX M1.2 L1.85 by using a T5 screwdriver.



Reassembly

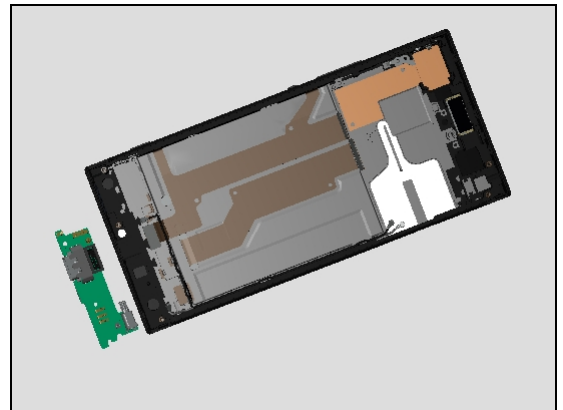
5.9 Spring Main Camera

Place the Spring Main Camera into its cavity properly by two guiding poles as shown.



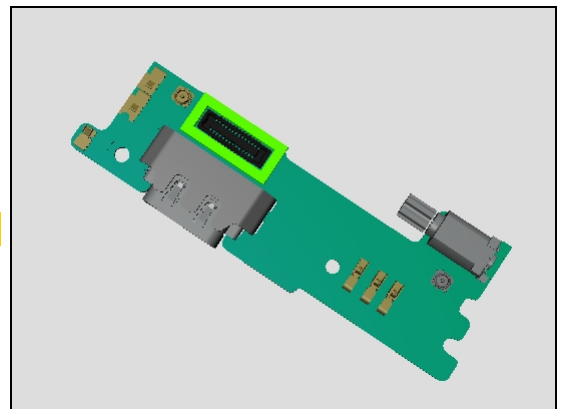
5.10 Sub PBA

Prepare Sub PBA in place.

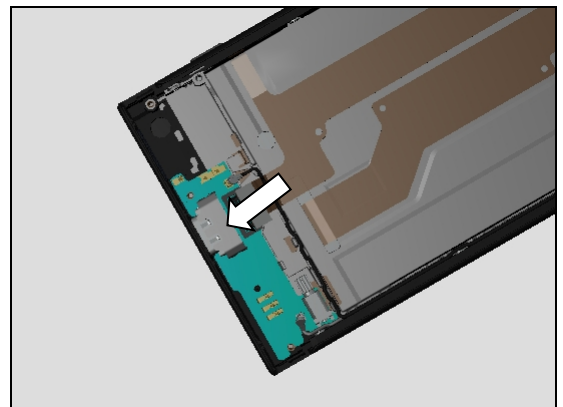


Replace a new Rubber BTB Sub PBA.

Rubber BTB Sub PBA cannot be reused!

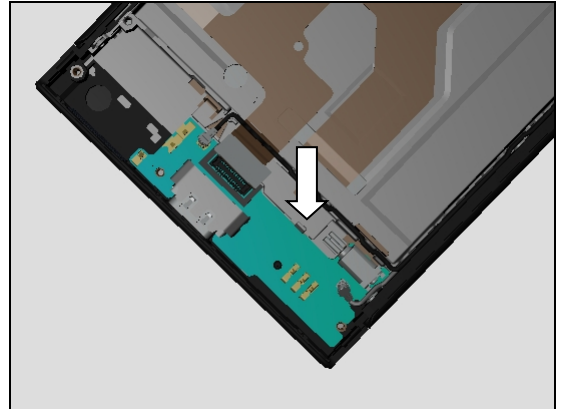


Insert the USB connector into its port firstly.

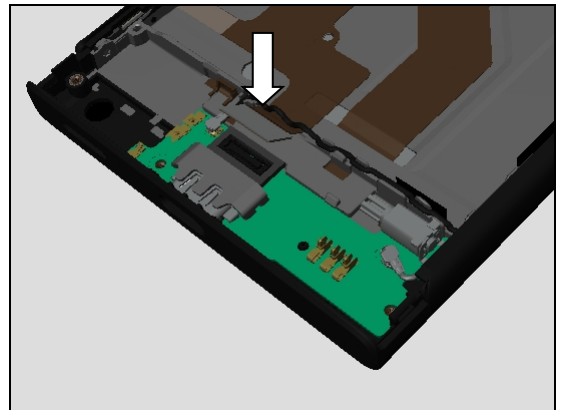


Reassembly

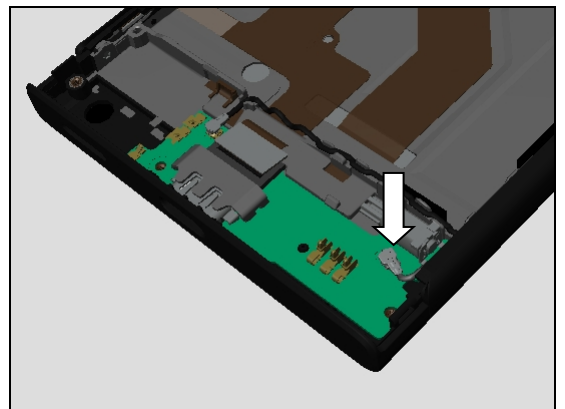
Press to snap the hook to secure its position.



Press to connect the RF connectors.

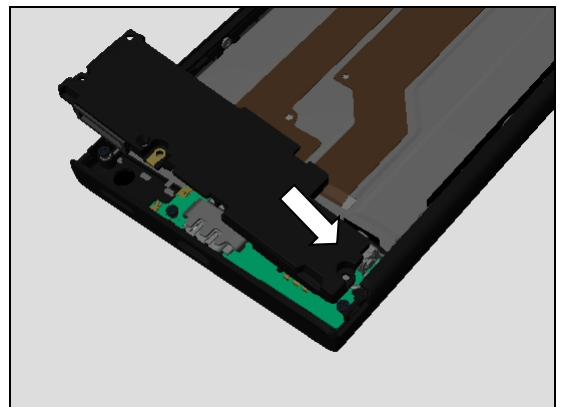


Press to connect the BtB connector.



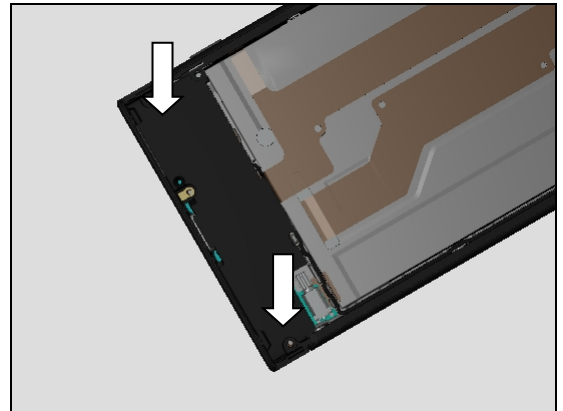
5.11 Speaker Box Assy

Prepare Speaker Box Assy in place.

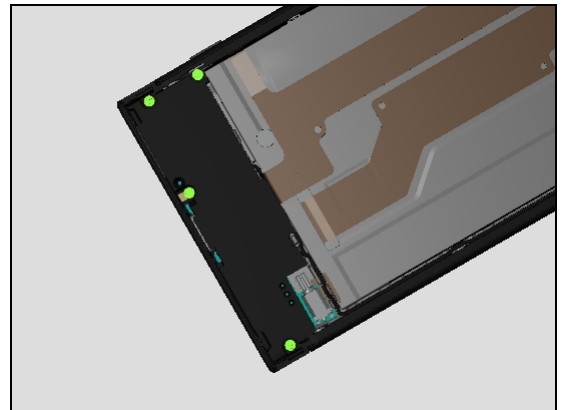


Reassembly

Press around to snap the Speaker Box Assy

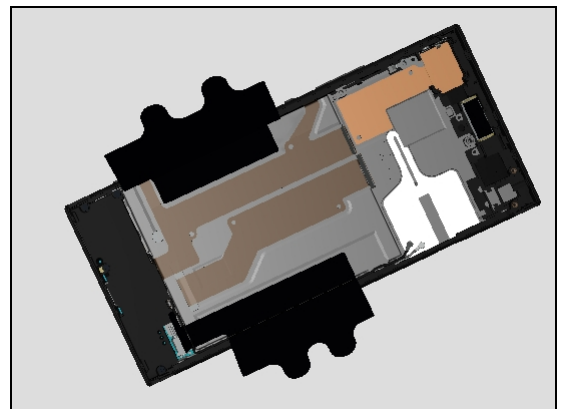


Tightening the four new Screw Cross M1.2 L2.62 by using a screwdriver with Bits JCIS No.0.

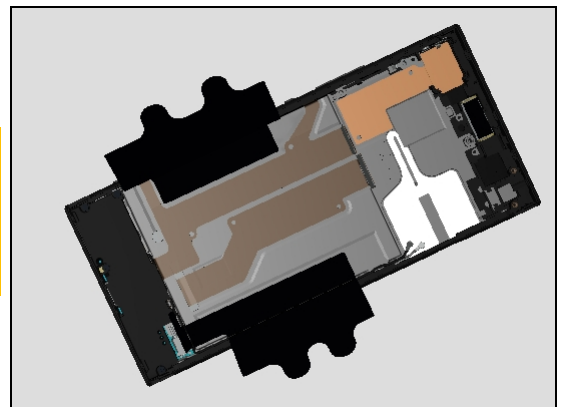


5.12 Battery & Film Mylar Battery Left & Film Mylar Battery Right

Attach a new Film Mylar Battery Left and Film Mylar Battery Right onto their proper position using the guiding lines as shown in picture.



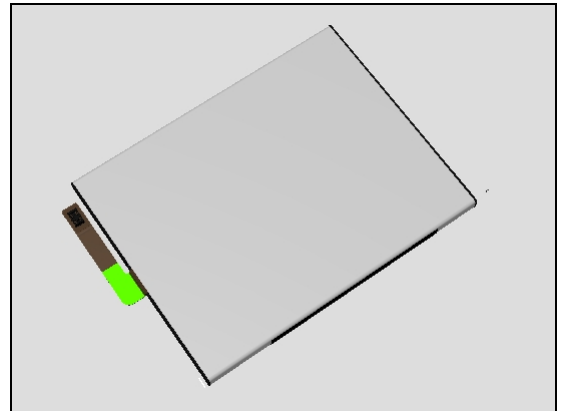
Note!
*Clean the battery cavity by using with air blower or ionized air blower.
Make sure no foreign materials in the battery cavity of the unit.*



Reassembly

If new Battery is used here.

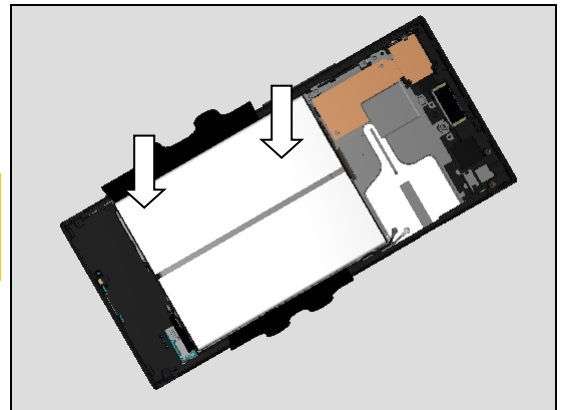
Attach a new Mylar Battery FPC Protect on the new Battery as position shown before assembling the Battery.



Place the Battery into its cavity gently.

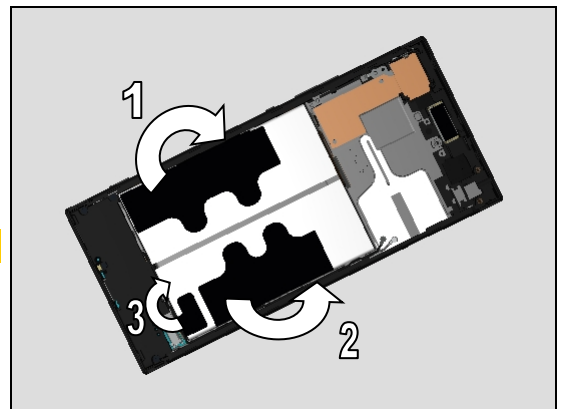
Note!

Follow Chapter 7. Battery Reuse Instruction before installing the battery.



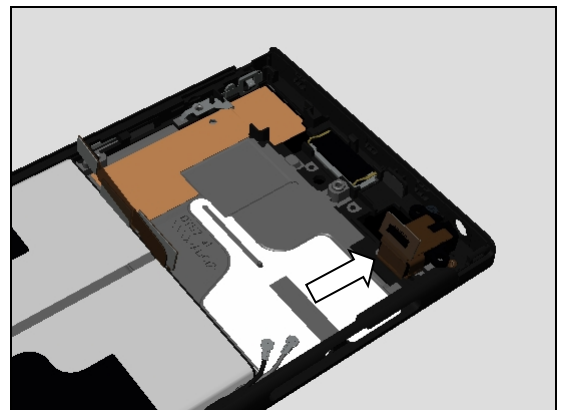
Attach the Film Mylar Battery Left and Film Mylar Battery Right as shown in picture.

Make sure the Mylars attachment is tight and smooth.



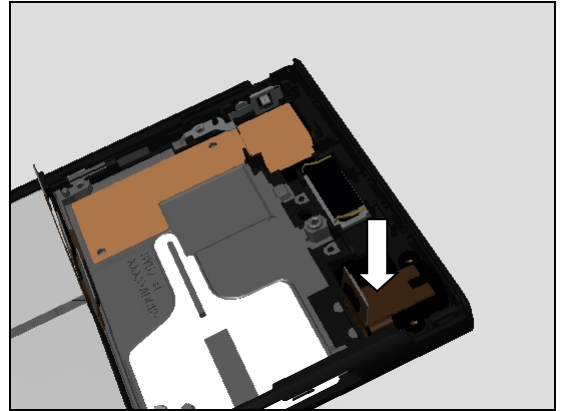
5.13 Audio Jack FPC

Insert the Audio Jack FPC head into its hole as shown in picture.

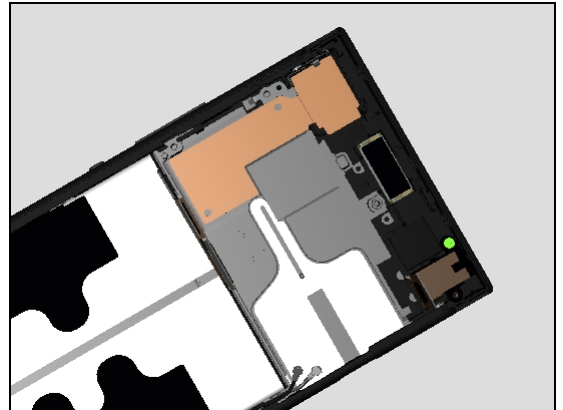


Reassembly

Press to snap the Audio Jack FPC into its position.

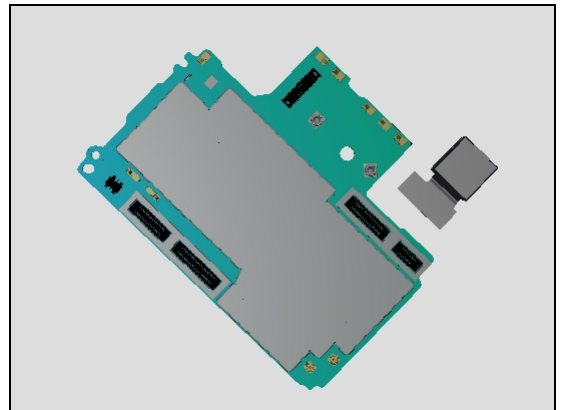


Apply 8Ncm torque when tightening the new Screw Cross M1.2 L2.62 with Bits JCIS No.0.

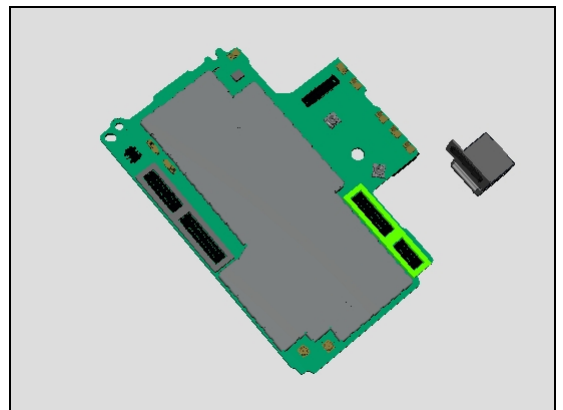


5.14 Front Camera

Prepare Front Camera and Main PBA in place.

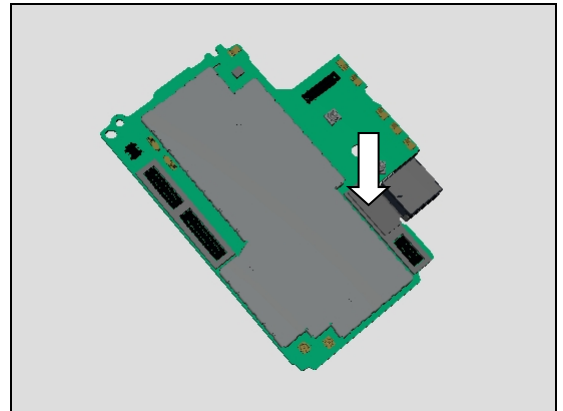


Replace a new Rubber BTB Audio Jack once the Front Camera has been removed from Main PBA.



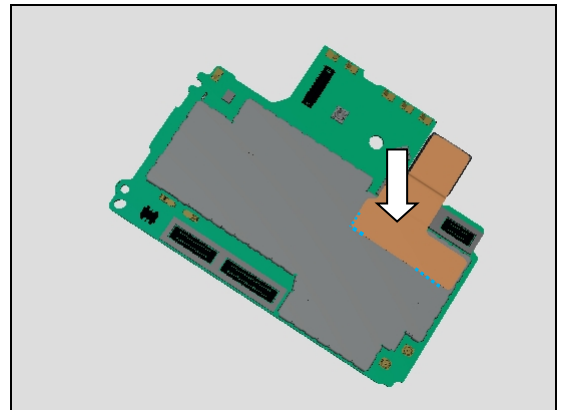
Reassembly

Press to connect the BtB connector of Front Camera.



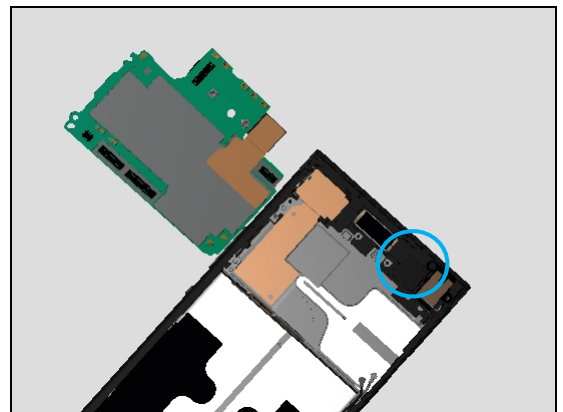
5.15 Conductive Tape Front Camera

Attach a new Conductive Tape Front Camera on the Main PBA using guide line on the Shield Can.

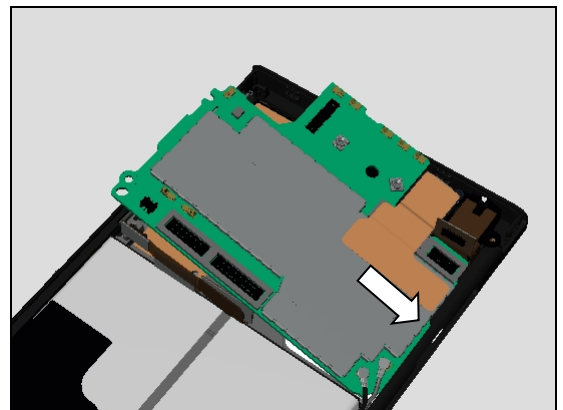


5.16 Main PBA

Inspect the Front Camera hole, prefer to use Air Blow to remove foreign material if needed.

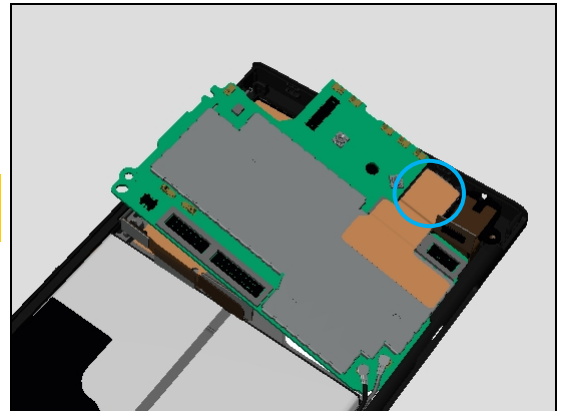


Insert to assemble the Main PBA into the SIM/SD hole as shown in picture.



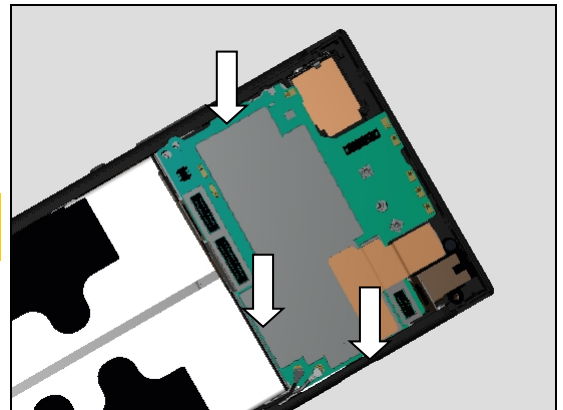
Reassembly

Make sure Front Camera's position before pressing the Main PBA!

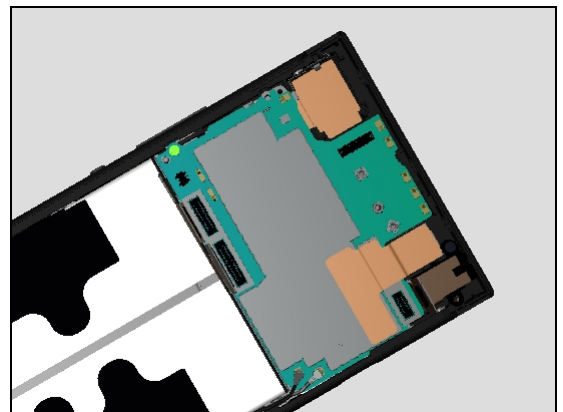


Press to snap the Main PBA.

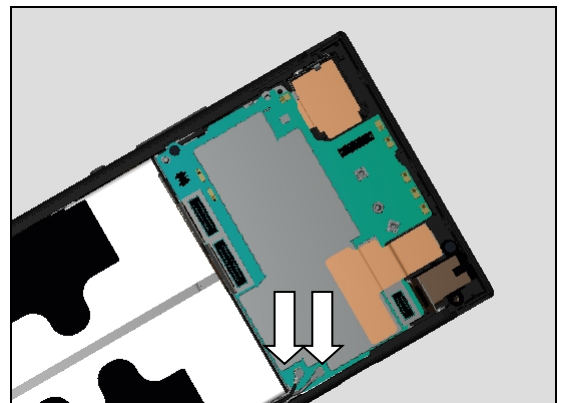
Be careful of not to touch Spring Pins on the edges of Main PBA!



Apply 8Ncm torque when tightening the Screw Cross M1.2 L2.62 with Bits JCIS No.0.

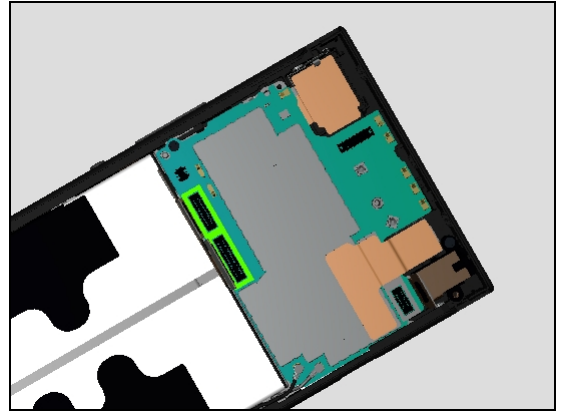


Press to snap the two RF connectors

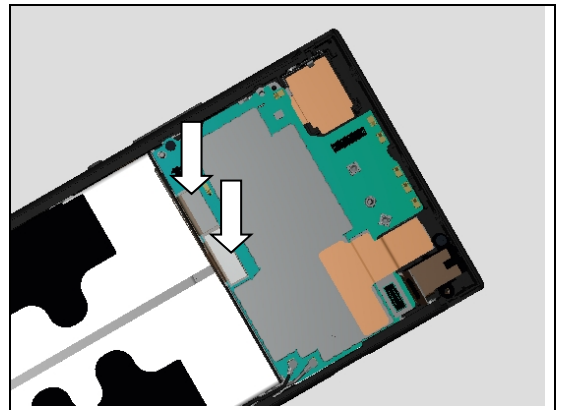


Reassembly

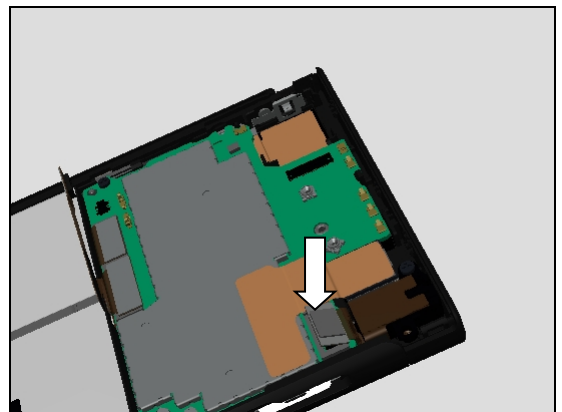
Replace a new Rubber BTB LCM using BtB connector's outline as guiding frame.



Press to snap BtB connector of Side Key FPC and Display FPC.



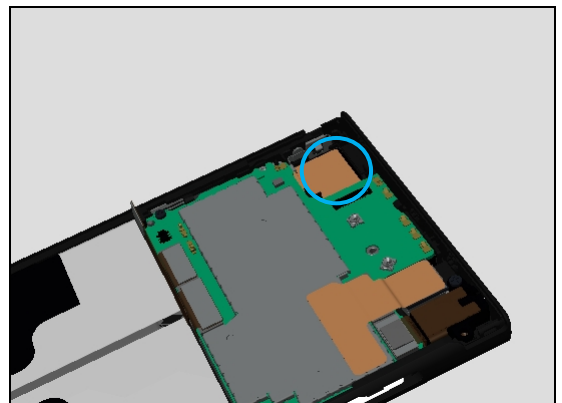
Press to snap BtB connector of Side Key FPC and Display FPC.



5.17 Main Camera

Inspect the Main Camera cavity on the Front Cover Assy.to check foreign material before assembly.

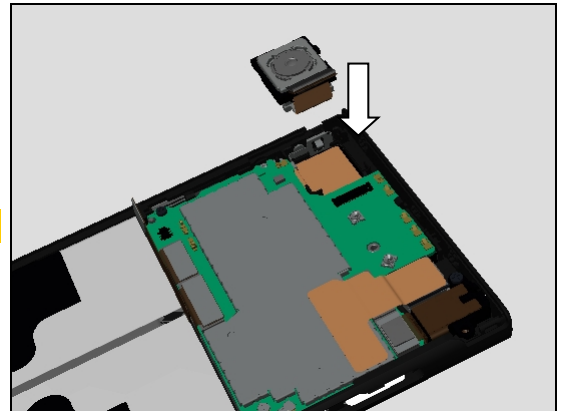
Use Air Blow to remove foreign material if needed.



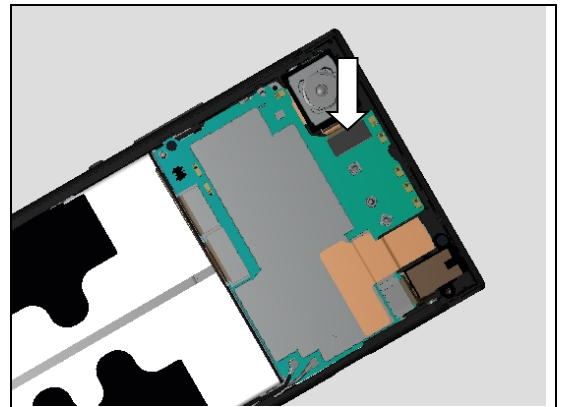
Reassembly

Place the Main Camera into its cavity.

Do not touch the Camera lens!

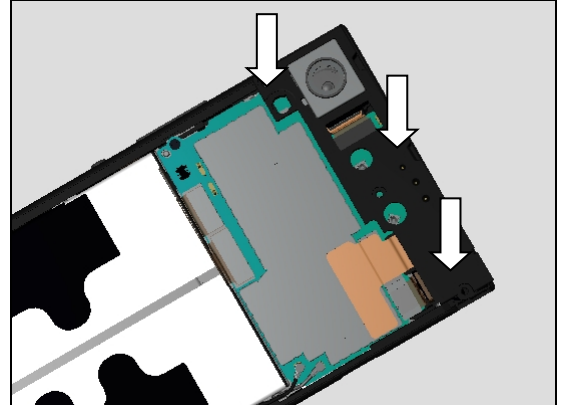


Press to connect the BtB connector of Main Camera.

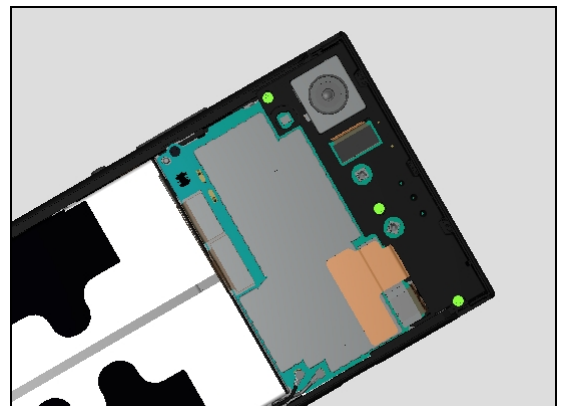


5.18 Antenna Box Assy

Press to snap the Antenna Box Assy.



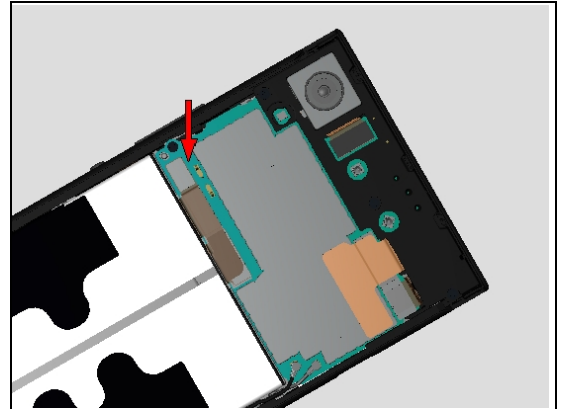
Apply 8Ncm torque when tightening three new Screw Cross Screw Cross M1.2 L2.62 with Bits JCIS No.0.



Reassembly

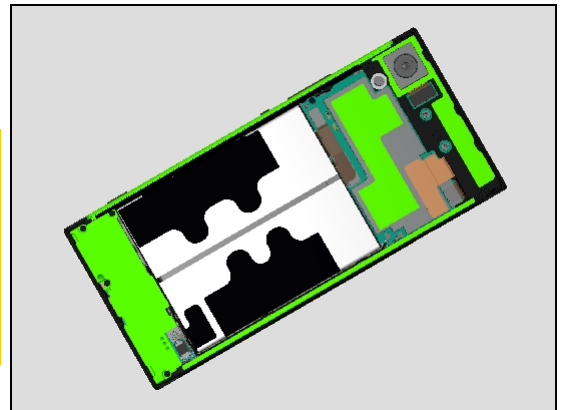
5.19 Battery Cover Assy

Press to snap the Battery connector.

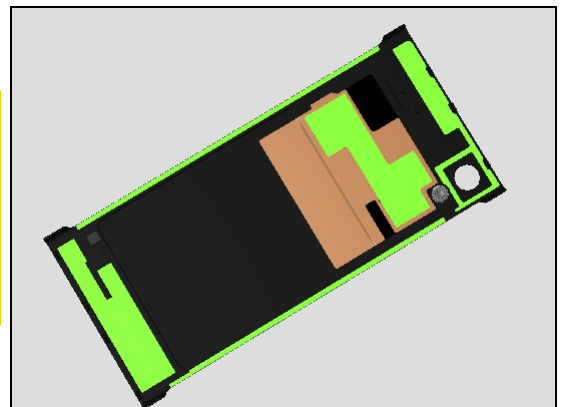


Before assembling the Battery Cover Assy:

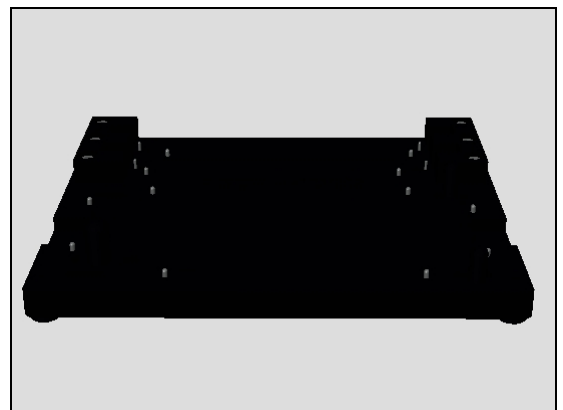
Make sure all remaining adhesive residue on the Front Cover Assy have been removed, then use Isopropyl Alcohol – 99 % to clean around the attaching area of the Adhesive Battery Cover Bottom, Adhesive Battery Cover Left, Adhesive Battery Cover Right, Adhesive Battery Cover Top and Adhesive NFC before assembly of the Battery Cover Assy.



Make sure all remaining adhesive residue on the Battery Cover Assy have been removed, then use Isopropyl Alcohol – 99 % to clean around the attaching area of the Adhesive Battery Cover Bottom, Adhesive Battery Cover Left, Adhesive Battery Cover Right, Adhesive Battery Cover Top and Adhesive NFC before assembly of the Battery Cover Assy.



Prepare the Panel Adhesive Fixture in place.



Reassembly

Put the new Adhesive Battery Cover Bottom, Adhesive Battery Cover Left, Adhesive Battery Cover Right, Adhesive Battery Cover Top on the fixture

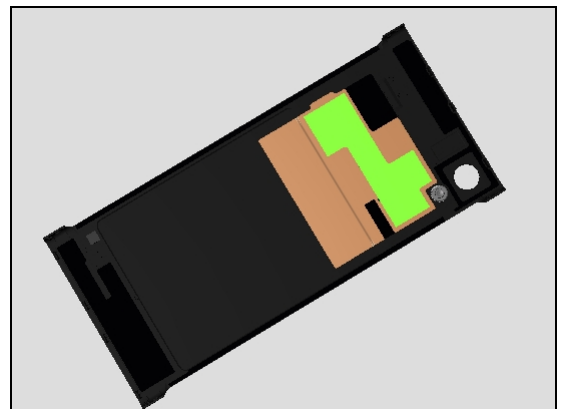
Note the correct orientation to be installed as shown in picture!



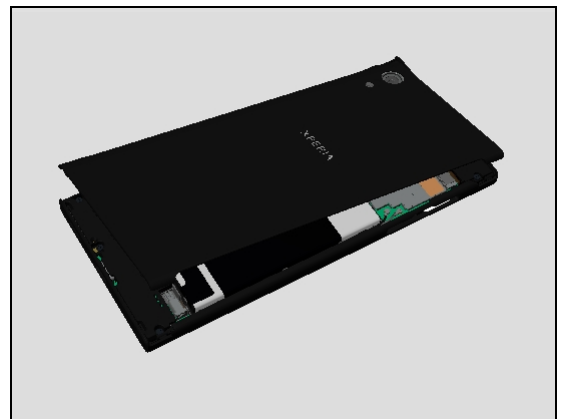
Place the Battery Cover Assy onto the Panel Adhesive Fixture using Camera Hole as guiding hole and press by hand to make sure adhesives securely attached.



Attach a new Adhesive NFC with alignment of NFC Antenna as shown mark in the picture.

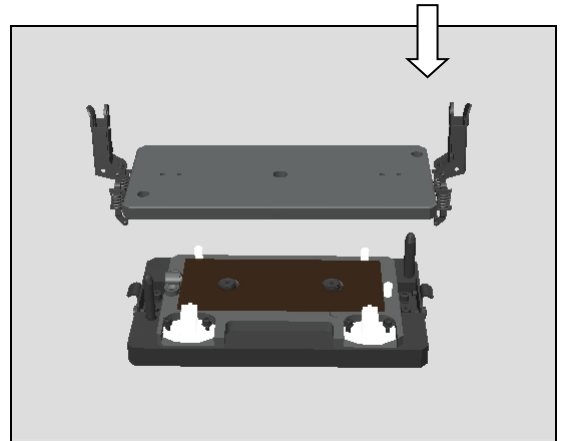


Place the Battery Cover Assy with good alignment of Front Cover Assy.



Reassembly

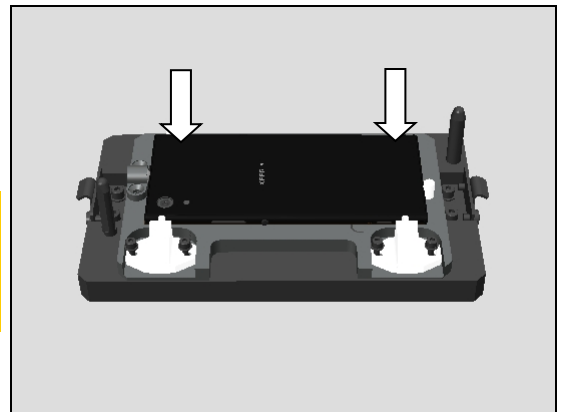
Prepare the Bottom Press Plate and Rear Cover Press Top in place.



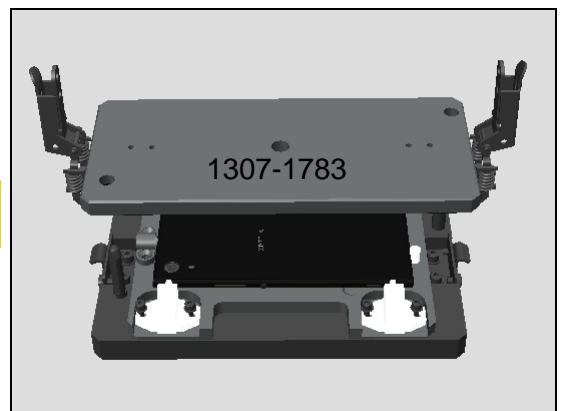
Place the phone (with the Battery Cover Assy upwards with correct orientation) onto the Rear Panel Press Tool Bottom in its proper position as shown in picture.

Note the correct orientation of the phone to be installed as shown in picture!

Keep the Cap SIM/SD open as shown in picture when pressing!

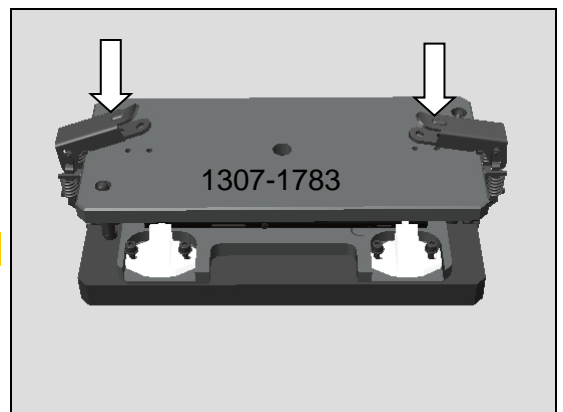


Note the correct orientation of the Rear Panel Press Tool Top Inlay to be installed as shown in picture!



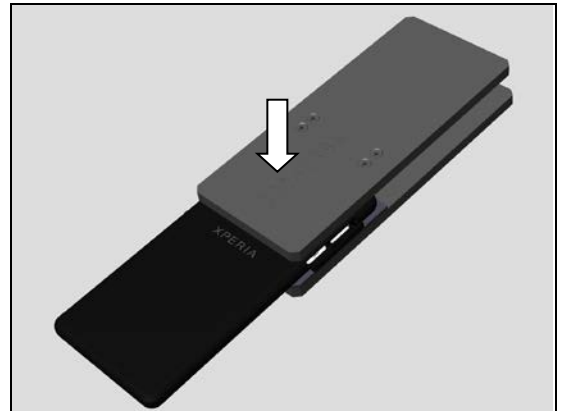
Place the Rear Panel Press Tool Top Inlay and lock it as shown in picture.

Keep pressing for 2 minutes.



Reassembly

Press the area of the Adhesive NFC by using the Press Clamp for 10 seconds.



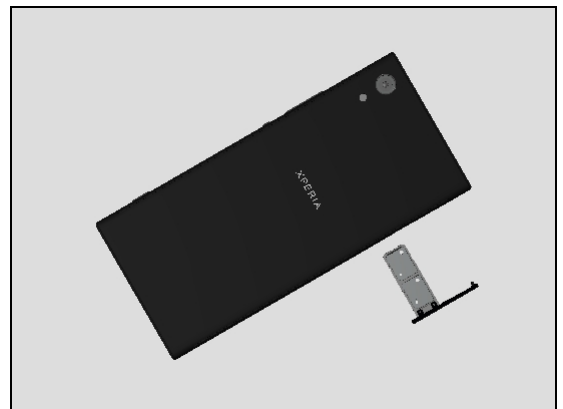
Note of how to use the Press Clamp:

- 1. Insert the phone to the bottom.**
- 2. The smaller press pad is used for pressing the area of the Adhesive NFC.**
- 3. The bigger press pad width is almost same as the phone width, so is used for positioning the phone.**



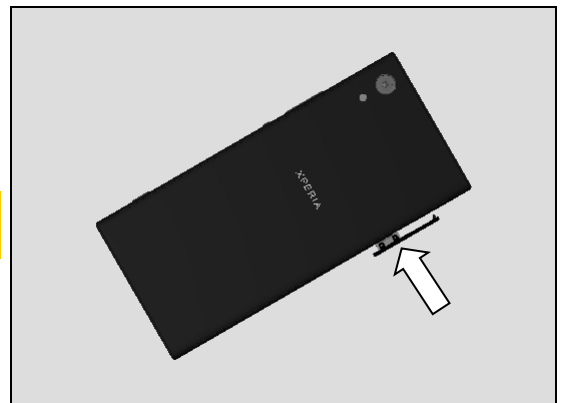
5.20 Cap Tray

Place the Cap Tray in place.



Insert the Cap Tray and press to snap it.

Proximity and Accelerometer Calibration must be performed after reassembly.



6 Battery Reuse Instruction

**If you intend to reuse the Battery, carefully follow the Battery Reuse Instruction.
If it is failed, Don't reuse, and Scrap the Battery.**

6.1 Battery Handling Notices

1. Don't damage the battery foil with sharp objects.
2. Don't twist or deform the battery.
3. If the battery is dropped, don't reuse, and scrap.
4. Hold the battery at the frame edges of battery (green circled portion).



6.2 Dot Mark Check

Check if the Battery (which has been removed from the unit) has blue/red or black/red dots marking.

Do not reuse, if the Battery has two (2) red dots marking, and scrap it.

Blue and black dot indicates Battery had been removed from the unit, and red dot indicates Battery had been reinstalled (reused).

Scrap! If the battery has two (2) red dots marking, it can't be reused for third times.

Can be reused

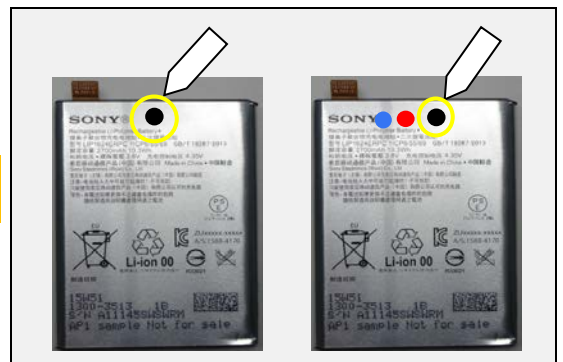


Can't be reused → Scrap



6.3 Dot Marking 1

If no dot marking on the Battery, put black dot marking with permanent pen.



Battery Reuse Instruction

6.4 Appearance Check

Check if any damages on the battery such as Winkle, Bubble, Dent, Floating up the AL sheet, Twist, and/ or Line.

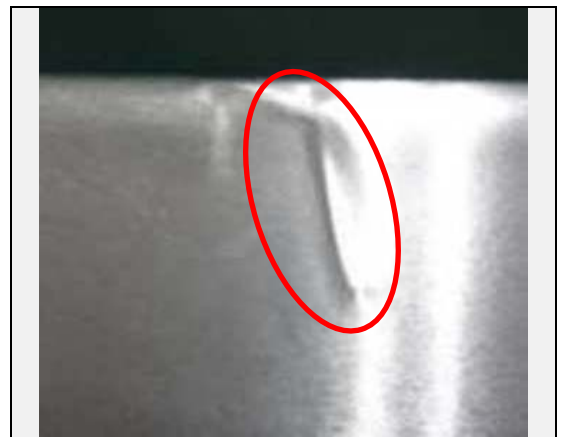
If it is out of below specification, do not reuse, and scrap the battery.

| Item of Damage | Limit of size | Limit of quantity |
|------------------|--|------------------------|
| Winkle | Length \leq 5mm | 1 wrinkle per Al sheet |
| Mark | No mark is allowed. | |
| Bubble | Diameter \leq Φ 2mm | 3 bubble per Al sheet |
| Dent | Diameter \leq Φ 2mm | 3 dents per surface |
| Scratch | Scratch is allowed as far as printed characters are visible. | |
| Lift up Al Sheet | No lifting up of the Al sheet is allowed. | |
| Twist | Twist line is allowed. | |
| Line | No line is allowed. | |

Definition of Damages and Sample Pictures

Wrinkle:

A slight line or fold on label or tape of the battery.



Mark:

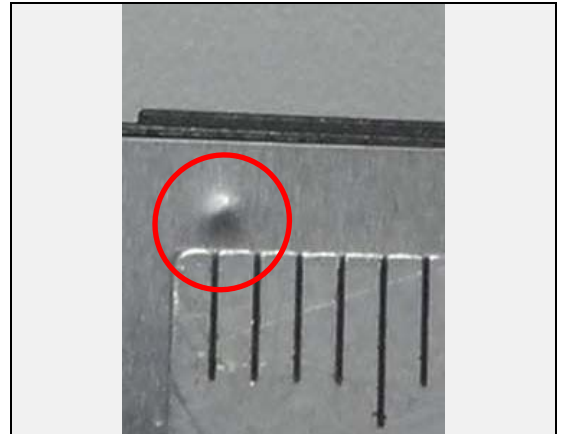
Surface is bulged as lined by foreign material is located between Al sheet and battery cell housing.



Battery Reuse Instruction

Bubble:

Surface is bulged as pointed by foreign material is located between Al sheet and battery cell housing.



Dent:

It is caused that is stuck by sharp pointed objects.



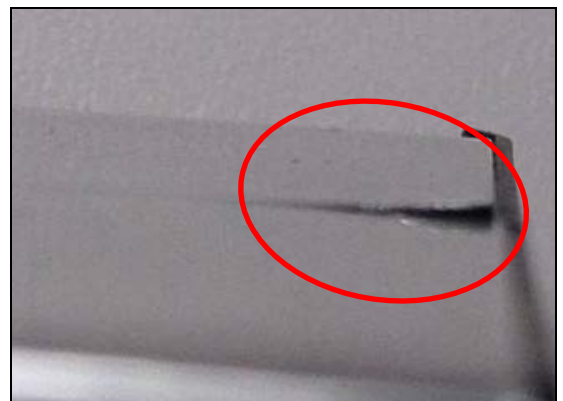
Scratch:

It is caused that scratched by sharp edge/pointed objects.



Lift up Al Sheet:

The edge of Al sheet is lifted caused by improper handling.



Battery Reuse Instruction

Twist:

Twisting line locates at the corner of battery pack that is created during Al sheet wrapping.



Line:

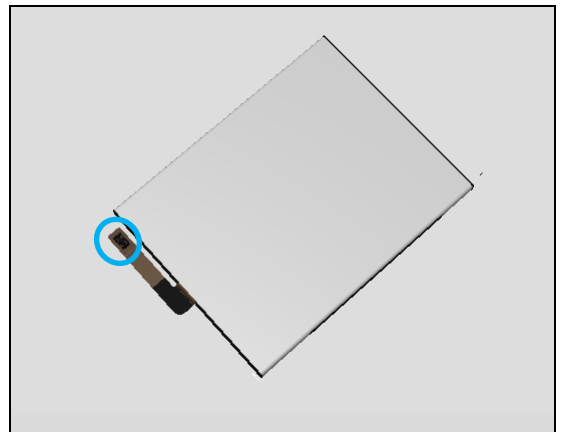
A slight line located at the border of battery cell and frame.



6.5 BtB Connector Check

Check if BtB connector has damages.

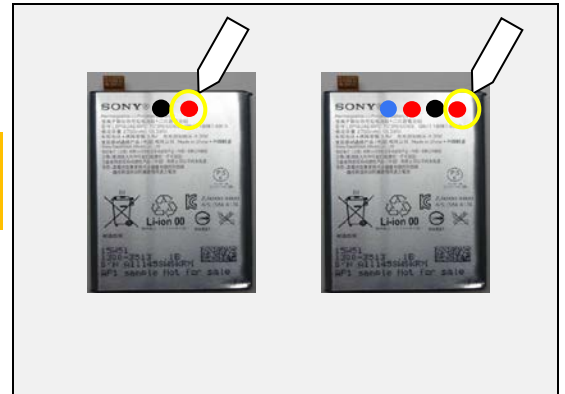
If any damages on the BtB connector, do not reuse, and scrap the battery.



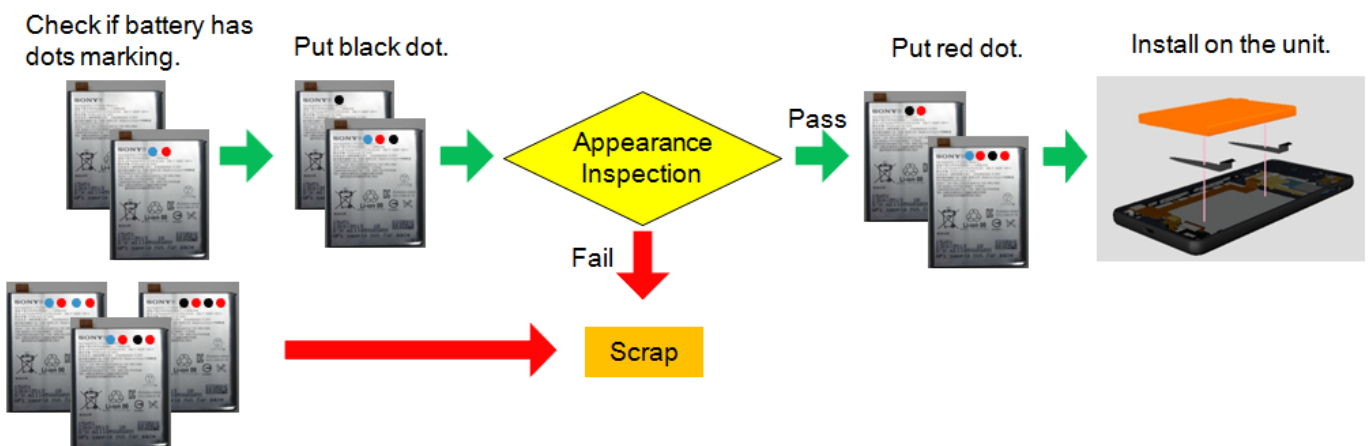
Battery Reuse Instruction

6.6 Dot Marking 2

If no failure has been detected by above appearance check, put the red dot marking on the Battery with permanent pen for reinstalling (reuse).



Overall procedure for Battery Reusing



7 Revision History

| Rev. | Date | Changes / Comments |
|------|-------------|---|
| 1 | 2017-Mar-17 | Initial release |
| 2 | 2017-Apr-06 | Add Disassembly Quick Reference Chart Update SMRA to Everest part number |